

The Secret's Out!

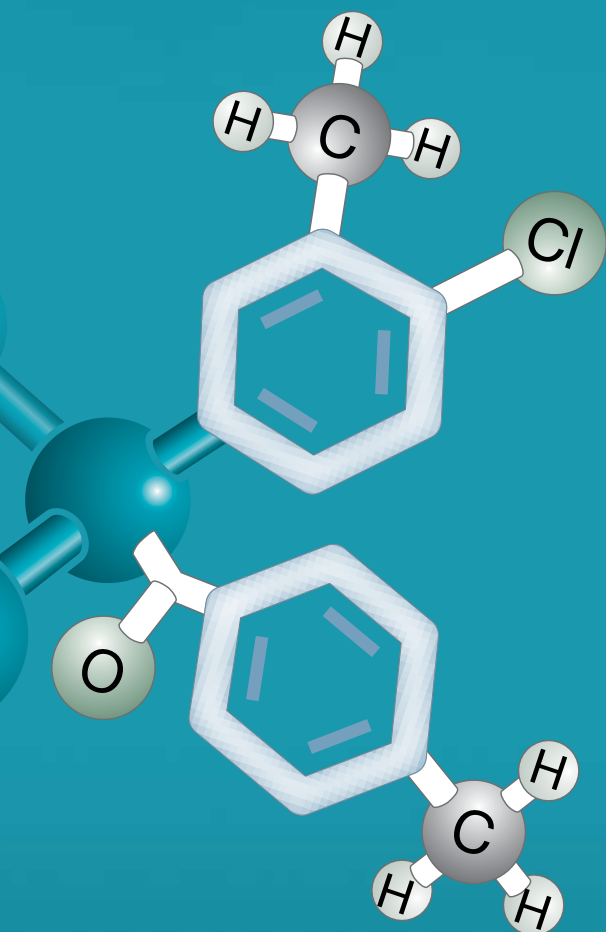
We have NEW Chiral Phases!



Resolve 92 %
of all your Enantiomers
using Lux[™] Screening Kits*

Now 5 unique phases to choose from!

NEW Polysaccharide-Based Lux™ Chiral Columns!



Lux™ Cellulose-4

Novel Chlorinated Cellulose Phase
cellulose tris(4-chloro-3-methylphenylcarbamate)

Lux™ Cellulose-3

Cellulose Ester Chiral Selector
cellulose tris(4-methylbenzoate)

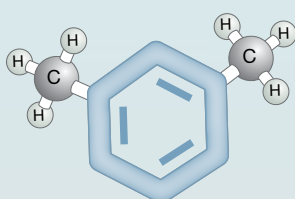
Lux™ Cellulose-3 and Lux™ Cellulose-4 phases are complementary to existing Lux™ amylose and cellulose CSPs (Chiral Stationary Phases), and make an excellent addition to your chiral screen.

- High efficiency and loading capacity
- Pressure stable up to 300 bar
- Stable in Normal Phase, Polar Organic, SFC, and Reversed Phase Conditions
- 3 µm and 5 µm packed columns and 20 µm bulk media for scale-up

Meet the other members of the Lux™ Family!

Lux™ Cellulose-1

cellulose tris(3,5-dimethylphenylcarbamate)

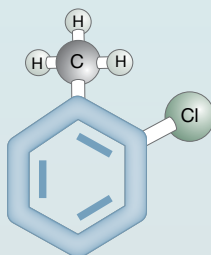


Cellulose Backbone

Guaranteed Replacement
For *CHIRALCEL® OD-H®

Lux™ Cellulose-2

cellulose tris(3-chloro-4-methylphenylcarbamate)

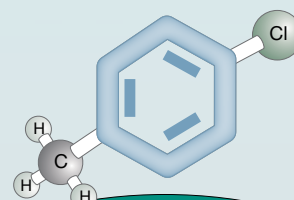


Cellulose Backbone

Chlorinated Cellulose Phase

Lux™ Amylose-2

amylose tris(5-chloro-2-methylphenylcarbamate)



Amylose Backbone

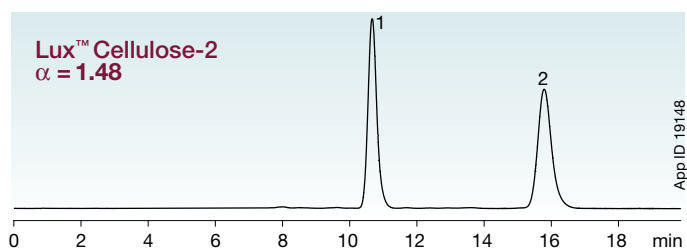
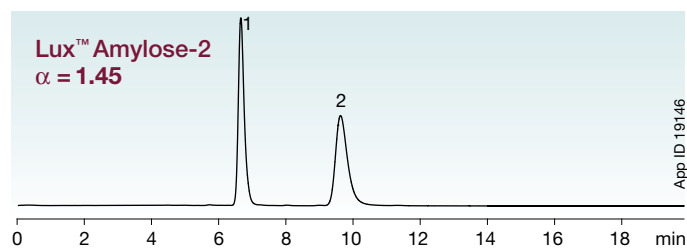
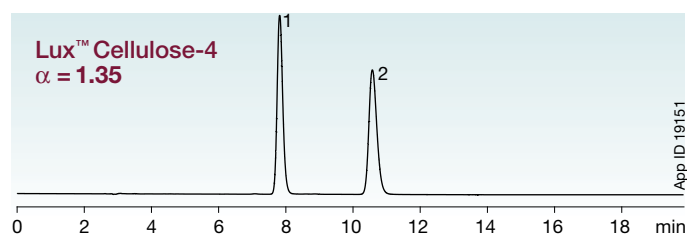
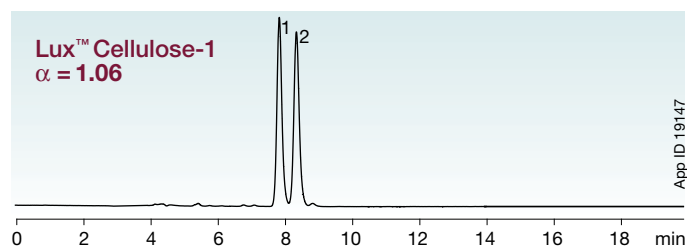
Chlorinated Amylose Phase

*CHIRALCEL and OD-H are registered trademarks of DAICEL Chemical Industries, Ltd. Lux is a trademark of Phenomenex, Inc.

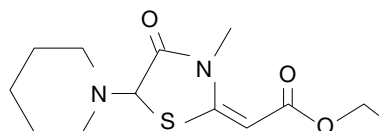
Achieve Optimal Resolution by Screening all Five Unique Lux™ Chiral Columns

Utilizing differences in selectivity can help develop methods more efficiently by offering broad and contrasting chiral recognition abilities. Lux™ chiral selectors provide a variety of complementary selectivities that give you the opportunity to screen for the most effective separation.

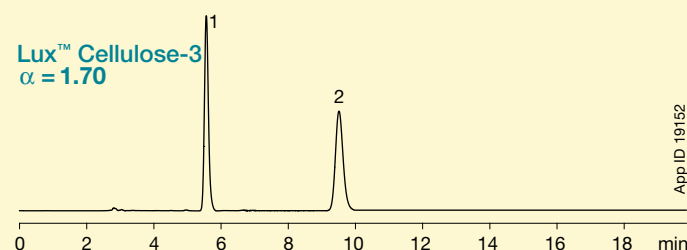
Etozolin



Conditions for all columns:
Dimensions: 250 x 4.6 mm
Mobile Phase: Acetonitrile / 0.1 % Diethylamine in 20 mM NH₄HCO₃ (60:40)
Flow Rate: 1 mL/min
Detection: UV @ 220 nm
Temperature: Ambient



Optimal Resolution



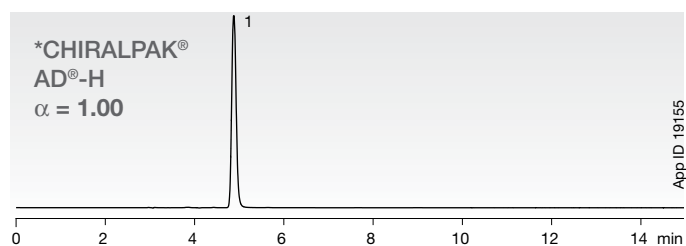
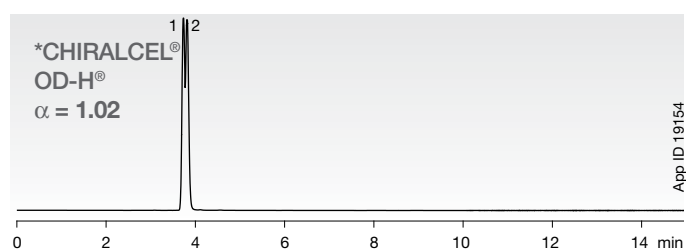
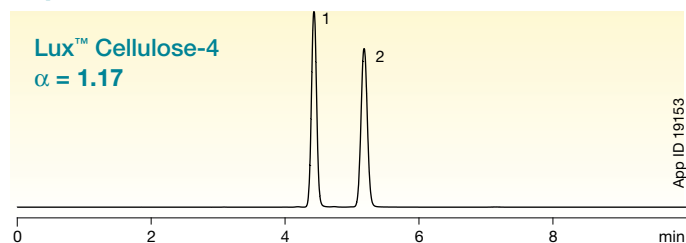
Based on a five phase screen under Reversed Phase conditions, the optimal chiral stationary phase for resolving Etozolin is Lux Cellulose-3.

Comparative separations may not be representative of all applications.

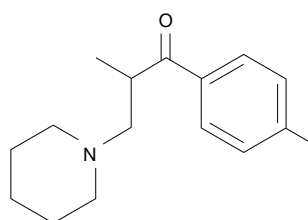
Lux™ Cellulose-4 cellulose tris(4-chloro-3-methylphenylcarbamate)

Innovative new chiral selector will succeed where others fail.

Tolperisone



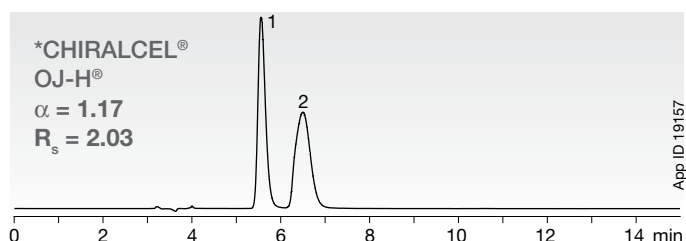
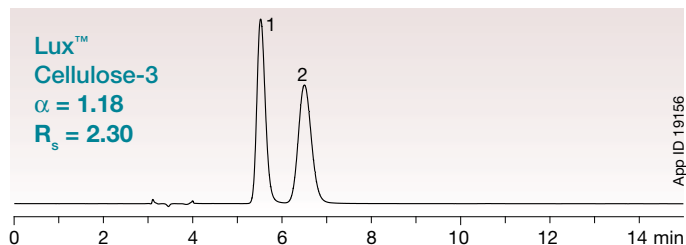
Conditions for all columns:
Dimensions: 250 x 4.6 mm
Mobile Phase: 0.1 % Diethylamine in Hexane /
 0.1 % Diethylamine in Isopropanol (90:10)
Flow Rate: 1 mL/min
Detection: UV @ 220 nm
Temperature: Ambient



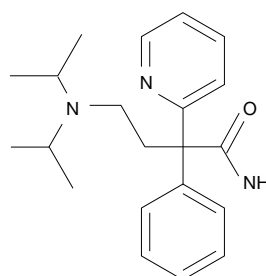
Lux™ Cellulose-3 cellulose tris(4-methylbenzoate)

Enhanced enantioselective properties provide higher resolution values and better performance for your separations.

Disopyramide



Conditions for both columns:
Dimensions: 250 x 4.6 mm
Mobile Phase: 0.1 % Diethylamine in Hexane /
 0.1 % Diethylamine in Ethanol (90:10)
Flow Rate: 1 mL/min
Detection: UV @ 220 nm
Temperature: Ambient



Comparative separations may not be representative of all applications. Columns used for comparison were manufactured by DAICEL Chemical Industries, Ltd. *CHIRALCEL, CHIRALPAK, AD, OJ-H and OD-H are registered trademarks of DAICEL Chemical Industries, Ltd. Lux is a trademark of Phenomenex, Inc.

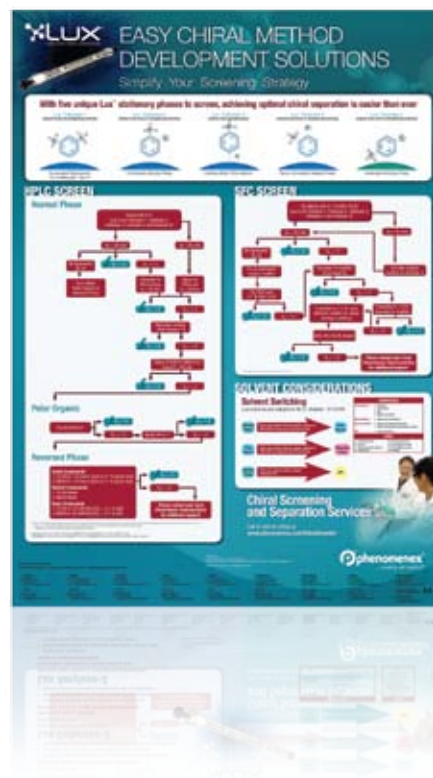
Easy Chiral Method Development

With five unique and complementary polysaccharide phases for screening, chiral method development just got easier. The more phases you have available to screen, the greater the chance of achieving optimal chiral resolution.

Build your own 3, 4, or 5 phase screening kits for in-house method development.

To get you started, we have outlined a simple strategy for screening CSPs under HPLC and SFC conditions in our chiral method development solutions poster.

Call or go online today to create your own custom screening kit or to request a chiral method development solutions poster at www.phenomenex.com/info/lux



FREE Chiral Screening and Separation Services

HPLC | SFC | Preparative | Training

Screening multiple chiral columns and solvent strategies for new methods is often a time consuming process.

Let us do the work for you

- Chiral Phase Screening
- Method Optimization
- Method Re-Validation
- Scale-Up Services
- On-Site Training

For more information on these services or to begin a project, please contact your local Phenomenex representative or email us at: phenodev@phenomenex.com

You can also visit us on the web: www.phenomenex.com/info/phenodev

Terms and Conditions
Subject to Phenomenex Standard Terms & Conditions, which may be viewed at www.phenomenex.com/TermsAndConditions.

Trademarks
CHIRALCEL, CHIRALPAK, AD, OJ-H and OD-H are registered trademarks of DAICEL Chemical Industries, Ltd. Lux, Axia, and SecurityGuard are trademarks of Phenomenex, Inc.

Disclaimer
Comparative separations may not be representative of all applications. Columns used for comparison were manufactured by DAICEL Chemical Industries, Ltd.

© 2010 Phenomenex, Inc. All rights reserved.



Lux™ Ordering Information

3 µm Analytical Columns (mm)

Phases	SecurityGuard™ Cartridges (mm)						4 x 2.0*	4 x 3.0*
	50 x 2.0	150 x 2.0	50 x 4.6	100 x 4.6	150 x 4.6	250 x 4.6	/10pk	/10pk
Cellulose-4	00B-4490-B0	00F-4490-B0	00B-4490-E0	00D-4490-E0	00F-4490-E0	00G-4490-E0	AJO-8626	AJO-8627
Cellulose-3	00B-4492-B0	00F-4492-B0	00B-4492-E0	00D-4492-E0	00F-4492-E0	00G-4492-E0	AJO-8621	AJO-8622
Cellulose-2	00B-4456-B0	00F-4456-B0	00B-4456-E0	00D-4456-E0	00F-4456-E0	00G-4456-E0	AJO-8398	AJO-8366
Cellulose-1	00B-4458-B0	00F-4458-B0	00B-4458-E0	00D-4458-E0	00F-4458-E0	00G-4458-E0	AJO-8402	AJO-8403
Amylose-2	00B-4471-B0	00F-4471-B0	00B-4471-E0	00D-4471-E0	00F-4471-E0	00G-4471-E0	AJO-8471	AJO-8470

for ID: 2.0–3.0 mm 3.2–8.0 mm

5 µm Analytical Columns (mm)

Phases	SecurityGuard™ Cartridges (mm)					4 x 2.0*	4 x 3.0*
	50 x 2.0	50 x 4.6	100 x 4.6	150 x 4.6	250 x 4.6	/10pk	/10pk
Cellulose-4	00B-4491-B0	00B-4491-E0	00D-4491-E0	00F-4491-E0	00G-4491-E0	AJO-8626	AJO-8627
Cellulose-3	00B-4493-B0	00B-4493-E0	00D-4493-E0	00F-4493-E0	00G-4493-E0	AJO-8621	AJO-8622
Cellulose-2	00B-4457-B0	00B-4457-E0	00D-4457-E0	00F-4457-E0	00G-4457-E0	AJO-8398	AJO-8366
Cellulose-1	00B-4459-B0	00B-4459-E0	00D-4459-E0	00F-4459-E0	00G-4459-E0	AJO-8402	AJO-8403
Amylose-2	00B-4472-B0	00B-4472-E0	00D-4472-E0	00F-4472-E0	00G-4472-E0	AJO-8471	AJO-8470

for ID: 2.0–3.0 mm 3.2–8.0 mm

5 µm Semi-Prep Columns (mm) SecurityGuard™ Cartridges (mm)

Phases	150 x 10.0	250 x 10.0	10 x 10.0 [‡]
Cellulose-4	00F-4491-N0	00G-4491-N0	AJO-8628
Cellulose-3	00F-4493-N0	00G-4493-N0	AJO-8623
Cellulose-2	00F-4457-N0	00G-4457-N0	AJO-8399
Cellulose-1	00F-4459-N0	00G-4459-N0	AJO-8404
Amylose-2	00F-4472-N0	00G-4472-N0	AJO-8472

for ID: 9–16 mm

20 µm Bulk Media

Phases	100 g	1 kg
Cellulose-1	04G-4473	04K-4473
Cellulose-2	04G-4464	04K-4464
Amylose-2	Δ	Δ

ΔPlease inquire for 20 µm Lux® Amylose-2, Cellulose-3 or Cellulose-4 media.

**Custom 3, 4 or 5
Phase Screening Kits!**

Call or go online today to create yours at a discounted price.
www.phenomenex.com/info/lux

5 µm Axia™ Packed Preparative Columns (mm)

Phases	SecurityGuard™ Cartridges (mm)				15 x 21.2**	15 x 30.0*
	150 x 21.2	250 x 21.2	250 x 30	250 x 50	/ea	/ea
Cellulose-4	00F-4491-P0-AX	00G-4491-P0-AX	00G-4491-U0-AX	00G-4491-V0-AX	AJO-8629	AJO-8630
Cellulose-3	00F-4493-P0-AX	00G-4493-P0-AX	00G-4493-U0-AX	00G-4493-V0-AX	AJO-8624	AJO-8625
Cellulose-2	00F-4457-P0-AX	00G-4457-P0-AX	00G-4457-U0-AX	00G-4457-V0-AX	AJO-8400	AJO-8401
Cellulose-1	00F-4459-P0-AX	00G-4459-P0-AX	00G-4459-U0-AX	00G-4459-V0-AX	AJO-8405	AJO-8406
Amylose-2	00F-4472-P0-AX	00G-4472-P0-AX	00G-4472-U0-AX	00G-4472-V0-AX	AJO-8473	AJO-8474

for ID: 18–29 mm 30–49 mm

*SecurityGuard Analytical Cartridges require holder, Part No. : KJO-4282

†SemiPrep SecurityGuard Cartridges require holder, Part No. : AJO-7220

**PREP SecurityGuard Cartridges require holder, Part No. : AJO-8223

‡PREP SecurityGuard Cartridges require holder, Part No. : AJO-8277

guarantee

If you are not completely satisfied with Lux analytical columns, send in your comparative data to a similar product within 45 days and KEEP THE COLUMN FOR FREE.