

APPLICATIONS

Analysis of Chloroquine and Its Metabolite Desethylchloroquine by LC-MS/MS using Kinetex® Core-Shell F5 LC Column

Dawn Chen
Phenomenex, Inc., 411 Madrid Ave., Torrance, CA 90501 USA

Overview

In this application note, we developed an LC-MS/MS method to analyze chloroquine (CQ), and its metabolite desethylchloroquine (DCQ), and hydroxychloroquine (HCQ), resulting in acceptable resolution and separation of the analytes.

LC-MS/MS Conditions

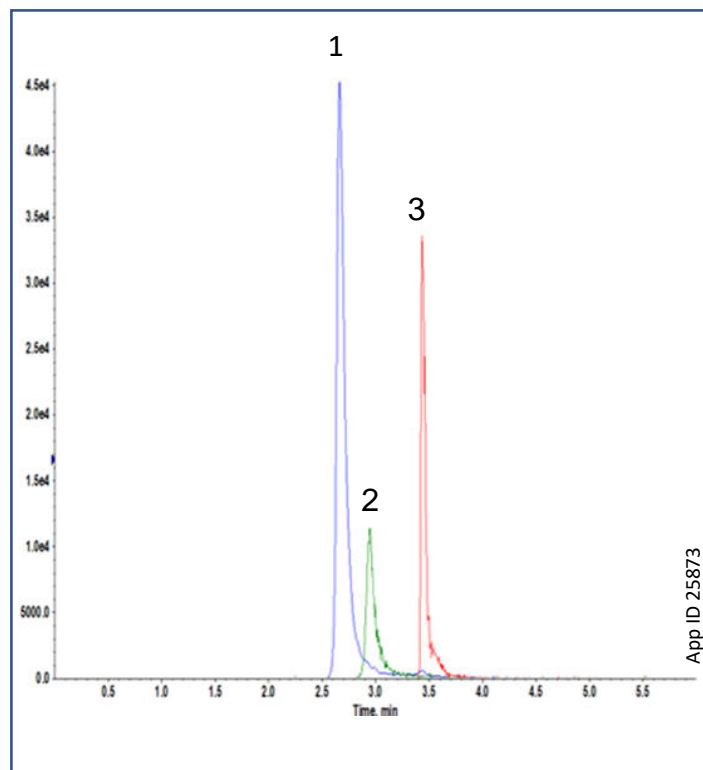
Column:	Kinetex 2.6 µm F5	
Dimension:	50 x 2.1 mm	
Part No.:	00B-4723-AN	
Mobile Phase:	A: Water with 0.1 % Formic Acid B: Methanol	
Gradient:	Time (min)	% B
	0.0	2
	2.0	7
	3.0	15
	3.2	40
	4.2	95
	4.3	2
	6.0	2
Flow Rate:	0.5 mL/min	
Temperature:	20 °C	
Detection:	MS/MS (MRM, SCIEX API 4000 QTRAP®)	
Sample:	Chloroquine mix	
	1. Desethylchloroquine (DCQ)	
	2. Hydroxychloroquine (HCQ)	
	3. Chloroquine (CQ)	

MS/MS Parameters

Ion Source	Turbo Spray, Positive
CUR	35
CAD	Medium
EP	10
GS1	60
GS2	60
IS	550
Source Temp	650 °C
iHe	ON
CEM	2200 (Detector, negative)

MS/MS Transitions

ID	Q1	Q3	Dwell	DP	CE	CXP
CQ (Quan)	320	247.1	50	65	33	10
CQ (Qual)	320	142.1	50	65	33	10
HCQ (Quan)	336.3	247.1	50	55	33	10
HCQ (Qual)	336.3	158.1	50	55	33	10
DCQ (Quan)	292.3	179.2	50	51	30	13
DCQ (Qual)	292.3	247.1	50	51	30	13



APPLICATIONS

Need a different column size or sample preparation format?

No problem! We have a majority of our available dimensions up on www.phenomenex.com, but if you can't find what you need right away, our super helpful Technical Specialists can guide you to the solution via our online chat portal www.phenomenex.com/ChatNow.

Australia

t: +61 (0)2-9428-6444
auiinfo@phenomenex.com

Austria

t: +43 (0)1-319-1301
anfrage@phenomenex.com

Belgium

t: +32 (0)2 503 4015 (French)
t: +32 (0)2 511 8666 (Dutch)
beinfo@phenomenex.com

Canada

t: +1 (800) 543-3681
info@phenomenex.com

China

t: +86 400-606-8099
cninfo@phenomenex.com

Denmark

t: +45 4824 8048
nordicinfo@phenomenex.com

Finland

t: +358 (0)9 4789 0063
nordicinfo@phenomenex.com

France

t: +33 (0)1 30 09 21 10
franceinfo@phenomenex.com

Germany

t: +49 (0)6021-58830-0
anfrage@phenomenex.com

India

t: +91 (0)40-3012 2400
indiainfo@phenomenex.com

Ireland

t: +353 (0)1 247 5405
eireinfo@phenomenex.com

Italy

t: +39 051 6327511
italiainfo@phenomenex.com

Luxembourg

t: +31 (0)30-2418700
nlinfo@phenomenex.com

Mexico

t: 01-800-844-5226
tecnicomx@phenomenex.com

The Netherlands

t: +31 (0)30-2418700
nlinfo@phenomenex.com

New Zealand

t: +64 (0)9-4780951
nzinfo@phenomenex.com

Norway

t: +47 810 02 005
nordicinfo@phenomenex.com

Poland

t: +48 (12) 881 0121
pl-info@phenomenex.com

Portugal

t: +351 221 450 488
ptinfo@phenomenex.com

Singapore

t: +65 800-852-3944
sginfo@phenomenex.com

Spain

t: +34 91-413-8613
espinfo@phenomenex.com

Sweden

t: +46 (0)8 611 6950
nordicinfo@phenomenex.com

Switzerland

t: +41 (0)61 692 20 20
swissinfo@phenomenex.com

Taiwan

t: +886 (0) 0801-49-1246
twinfo@phenomenex.com

United Kingdom

t: +44 (0)1625-501367
ukinfo@phenomenex.com

USA

t: +1 (310) 212-0555
info@phenomenex.com

🌐 **All other countries/regions**
Corporate Office USA
t: +1 (310) 212-0555
info@phenomenex.com

www.phenomenex.com

Phenomenex products are available worldwide. For the distributor in your country/region, contact Phenomenex USA, International Department at international@phenomenex.com

Terms and Conditions

Subject to Phenomenex Standard Terms and Conditions, which may be viewed at www.phenomenex.com/TermsAndConditions.

Trademarks

Kinetex is a registered trademark of Phenomenex. SCIEX and QTRAP are registered trademarks of AB SCIEX Pte. Ltd. AB SCIEX™ is being used under license.

FOR RESEARCH USE ONLY. Not for use in clinical diagnostic procedures.

© 2020 Phenomenex, Inc. All rights reserved.