



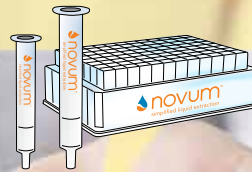
strata® DE
Supported Liquid Extraction

Diatomaceous Earth



novum™
simplified liquid extraction

Synthetic



Supported Liquid Extraction (SLE)

Choose Between Two Unique Sorbents

 **phenomenex**®
...breaking with traditionSM



www.phenomenex.com/SLE

Novum Synthetic SLE

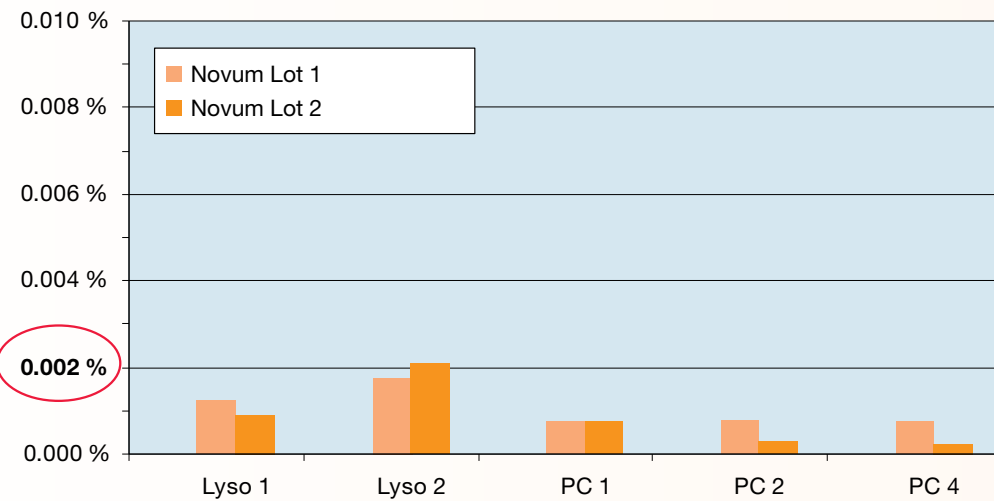
As a unique, synthetic SLE sorbent, expect Novum to provide reliable, more consistent lot-to-lot clean-up that excels under extraction conditions where traditional diatomaceous earth SLE falls short, such as ethyl acetate.

Recommended Uses:

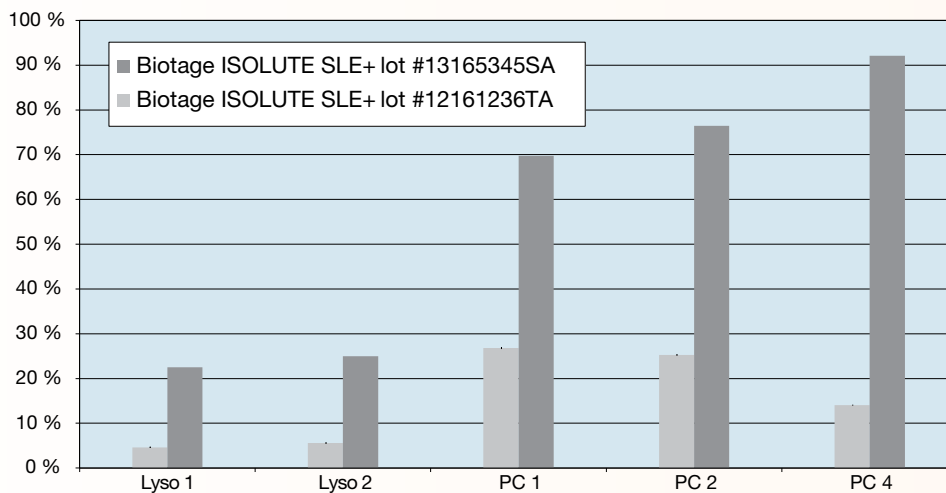
- Ethyl acetate extractions
- Small volume samples



Achieve Cleaner Eluents Compared to Biotage® ISOLUTE® SLE+



Consistently Remove More Phospholipids Compared to Biotage ISOLUTE SLE+

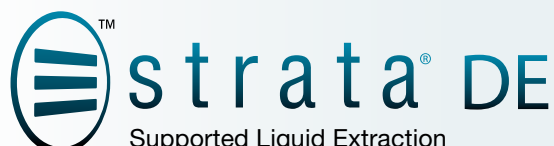


- Lyso 1: 1-Palmitoyl-2-OH-sn-glycero-phosphocholine (m/z 496-184)
- Lyso 2: 1-Oleoyl-2-OH-sn-glycero-phosphocholine (m/z 522-184)
- PC 1: 1-Palmitoyl-2-Oleoyl-sn-glycero-phosphocholine (m/z 761-184)
- PC 2: 1-Stearoyl-2-Lindoleoyl-sn-glycero-phosphocholine (m/z 787-184)
- PC 4: 1-Oleoyl-2-Lindoleoyl-sn-glycero-phosphocholine (m/z 784-184)

Plasma extractions were performed using 200µL plates and ethyl acetate as an elution solvent. The recommended protocol provided with each product was followed. Comparative separations may not be representative of all applications. Phenomenex is in no way affiliated with Biotage AB Corp.

Choose the Best SLE Solution for Your Analysis

Phenomenex provides two options for your SLE analysis, a unique synthetic sorbent and a traditional diatomaceous earth sorbent, each of which provides its own benefits.



Synthetic	Sorbent Type	Diatomaceous Earth
Lot-to-lot consistency and reproducibility	Advantages	Cost effective and large volume capabilities
Ethyl Acetate, Methyl Tert-Butyl Ether (MTBE)	Extraction Solvents	Dichloromethane (DCM), Hexane, MTBE, Ethyl Acetate
MINI 96-Well Plates, MAX 96-Well Plates	Plate Formats	200 μ L 96-Well Plates, 400 μ L 96-Well Plates
1 cc, 3 cc, 6 cc, 12 cc	Tube Formats	12 cc and 60 cc

Let us do the work!

To learn which SLE product is right for your method:



Call Your
Phenomenex
Representative

or



Live Chat
www.phenomenex.com/LiveChat

Strata DE Diatomaceous Earth SLE

Packed with diatomaceous earth, Strata DE is a cost-effective alternative to traditional SLE products such as, Biotage® ISOLUTE® SLE+, Thermo Scientific® HyperSep™ SLE, and Agilent® Chem Elut® SLE, that won't require you to sacrifice your results.

Recommended Uses:

- Direct alternative to traditional diatomaceous earth SLE sorbents
- Non-oxygenated extraction solvents such as DCM and Hexane



Guaranteed Low Cost Alternative to Biotage ISOLUTE SLE+

Analyte	Strata DE		Biotage ISOLUTE SLE+	
	% Recovery	% CV (n=8)	% Recovery	% CV (n=8)
6-MAM	98	9	88	16
Alprazolam	104	10	98	11
Benzoylcegonine	88	6	98	11
Buprenorphine	93	7	102	15
Codeine	99	12	93	9
Diazepam	107	7	104	6
Fentanyl	85	5	94	8
Hydrocodone	104	11	93	11
Hydromorphone	95	9	93	11
Lorazepam	94	8	98	8
Methamphetamine	92	16	102	8
Morphine	98	12	94	12
Norbuprenorphine	101	11	92	11
Nordiazepam	100	9	92	8
Norfentanyl	113	7	110	11
Oxycodone	97	5	93	11
PCP	90	7	98	6

SLE Protocol

96-Well Plate: Strata DE SLE 400 µL
Biotage ISOLUTE SLE+ 400 µL

Part No.: 8E-S325-5GB (Strata DE)

Load: 300 µL pre-treated sample onto plate
(apply vacuum or positive pressure to pull/
push sample into sorbent if necessary)

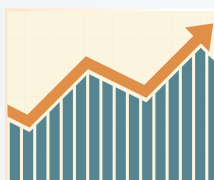
Wait: 6 minutes

Elute: 3x 600 µL Dichloromethane/IPA (95:5)

Apply: Vacuum or apply positive pressure at 5-10"
Hg for 10 seconds

Dry: Sample under slow stream of Nitrogen at
30°C

Reconstitute: 100 µL 0.1% Formic Acid/Methanol (4:1)
with internal standard



See how much you can save at
www.phenomenex.com/stratade

Comparative separations may not be representative of all applications.
Phenomenex is in no way affiliated with Biotage AB Corp.

Ordering Information

With two SLE sorbent options to choose from we guarantee* that our products will work as good or better than your current SLE products. Try it for yourself!



Synthetic SLE



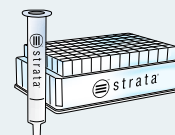
Novum Simplified Liquid Extraction (SLE) Well Plates

Novum SLE 96-Well Plates		
Part No.	Description	Unit
8E-S138-FGA	Novum SLE MINI 96-Well Plate	1/pk
8E-S138-5GA	Novum SLE MAX 96-Well Plate	1/pk

Novum Simplified Liquid Extraction (SLE) Tubes

Novum SLE Tubes		
Part No.	Description	Unit
8B-S138-FAK	Novum SLE 1 cc Tubes	100/pk
8B-S138-5BJ	Novum SLE 3 cc Tubes	50/pk
8B-S138-JCH	Novum SLE 6 cc Tubes	30/pk
8B-S138-KDG	Novum SLE 12 cc Tubes	20/pk

Diatomaceous Earth SLE



Strata DE Diatomaceous Earth (SLE) Well Plates

Strata DE SLE 96-Well Plates		
Part No.	Description	Unit
8E-S325-FGB	Strata DE SLE 200 µL 96-Well Plate	2/pk
8E-S325-5GB	Strata DE SLE 400 µL 96-Well Plate	2/pk

Strata DE Diatomaceous Earth (SLE) Tubes

Strata DE SLE Tubes		
Part No.	Description	Unit
8B-S325-KDG	Strata DE SLE 12 cc Tubes	20/pk
8B-S325-VFF	Strata DE SLE 60 cc Tubes	16/pk

*



If Phenomenex SLE products do not perform as well or better than your current SLE product, return the product with comparative data within 45 days for a FULL REFUND.



Presston 100 Positive Pressure Manifold

Presston 100		
Part No.	Description	Unit
AH0-9334	Presston 100 Positive Pressure Manifold, 96-Well Plate	ea
AH0-9342	Presston 100 Positive Pressure Manifold, 1 mL Tube Complete Assembly	ea
AH0-9347	Presston 100 Positive Pressure Manifold, 3 mL Tube Complete Assembly	ea
AH0-9343	Presston 100 Positive Pressure Manifold, 6 mL Tube Complete Assembly	ea

The Presston 100 96-Well Positive Pressure Manifold can also process 1, 3, and 6 mL tubes using the following adapter kits:

Presston 100 Tube Adapter Kits (for AH0-9334)		
Part No.	Description	Unit
AH0-9344	1 mL Tube Adapter Kit	ea
AH0-9345	3 mL Tube Adapter Kit	ea
AH0-9346	6 mL Tube Adapter Kit	ea



Vacuum Manifolds

Vacuum Manifolds		
Part No.	Description	Unit
AH0-6023	12-Position Tube Vacuum Manifold Set	ea
AH0-6024	24-Position Tube Vacuum Manifold Set	ea
AH0-8950	96-Well Plate Manifold, Universal with Vacuum Gauge	ea



Phenomenex warrants that for a period of 12 months following delivery, the Presston 100 Positive Pressure Manifold you have purchased will perform in accordance with the published specifications and will be free from defects in materials or workmanship. In the event that the Presston 100 Positive Pressure Manifold does not meet this warranty, Phenomenex will repair or replace defective parts. Please visit www.phenomenex.com/Presston for complete warranty information.

Supported Liquid Extraction (SLE)

Choose Between Two Unique Sorbents

Australia

t: +61 (0)2-9428-6444
f: +61 (0)2-9428-6445
auinfo@phenomenex.com

Austria

t: +43 (0)1-319-1301
f: +43 (0)1-319-1300
anfrage@phenomenex.com

Belgium

t: +32 (0)2 503 4015 (French)
t: +32 (0)2 511 8666 (Dutch)
f: +31 (0)30-2383749
beinfo@phenomenex.com

Canada

t: +1 (800) 543-3681
f: +1 (310) 328-7768
info@phenomenex.com

China

t: +86 400-606-8099
f: +86 (0)22 2532-1033
phen@agela.com

Denmark

t: +45 4824 8048
f: +45 4810 6265
nordicinfo@phenomenex.com

Finland

t: +358 (0)9 4789 0063
f: +45 4810 6265
nordicinfo@phenomenex.com

France

t: +33 (0)1 30 09 21 10
f: +33 (0)1 30 09 21 11
franceinfo@phenomenex.com

Germany

t: +49 (0)6021-58830-0
f: +49 (0)6021-58830-11
anfrage@phenomenex.com

India

t: +91 (0)40-3012 2400
f: +91 (0)40-3012 2411
indiainfo@phenomenex.com

Ireland

t: +353 (0)1 247 5405
f: +44 1625-501796
eireinfo@phenomenex.com

Italy

t: +39 051 6327511
f: +39 051 6327555
italiainfo@phenomenex.com

Luxembourg

t: +31 (0)30-2418700
f: +31 (0)30-2383749
nlinfo@phenomenex.com

Mexico

t: 01-800-844-5226
f: 001-310-328-7768
tecnicomx@phenomenex.com

The Netherlands

t: +31 (0)30-2418700
f: +31 (0)30-2383749
nlinfo@phenomenex.com

New Zealand

t: +64 (0)9-4780951
f: +64 (0)9-4780952
nzinfo@phenomenex.com

Norway

t: +47 810 02 005
f: +45 4810 6265
nordicinfo@phenomenex.com

Puerto Rico

t: +1 (800) 541-HPLC
f: +1 (310) 328-7768
info@phenomenex.com

Spain

t: +34 91-413-8613
f: +34 91-413-2290
espinfo@phenomenex.com

Sweden

t: +46 (0)8 611 6950
f: +45 4810 6265
nordicinfo@phenomenex.com

Switzerland

t: +41 61 692 20 20
f: +41 61 692 20 22
swissinfo@phenomenex.com

United Kingdom

t: +44 (0)1625-501367
f: +44 (0)1625-501796
ukinfo@phenomenex.com

USA

t: +1 (310) 212-0555
f: +1 (310) 328-7768
info@phenomenex.com

All other countries Corporate Office USA

t: +1 (310) 212-0555
f: +1 (310) 328-7768
info@phenomenex.com



www.phenomenex.com

Phenomenex products are available worldwide. For the distributor in your country, contact Phenomenex USA, International Department at international@phenomenex.com

Terms & Conditions

Subject to Phenomenex Standard Terms & Conditions, which may be viewed at www.phenomenex.com/TermsAndConditions.

Trademarks

Strata is a registered trademark and Novum and Presston are trademarks of Phenomenex. Biotage and ISOLUTE are registered trademarks of Biotage AB Corp. Thermo Scientific is a registered trademark and HyperSep is a trademark of Thermo Fisher Scientific Inc. Agilent and Chem Elut are registered trademarks of Agilent Technologies, Inc.

Disclaimer

Comparative separations may not be representative of all applications. Phenomenex is in no way affiliated with Biotage AB Corp, Thermo Fisher Scientific Inc., or Agilent Technologies, Inc.

Novum is patent pending.

© 2018 Phenomenex Inc. All rights reserved.