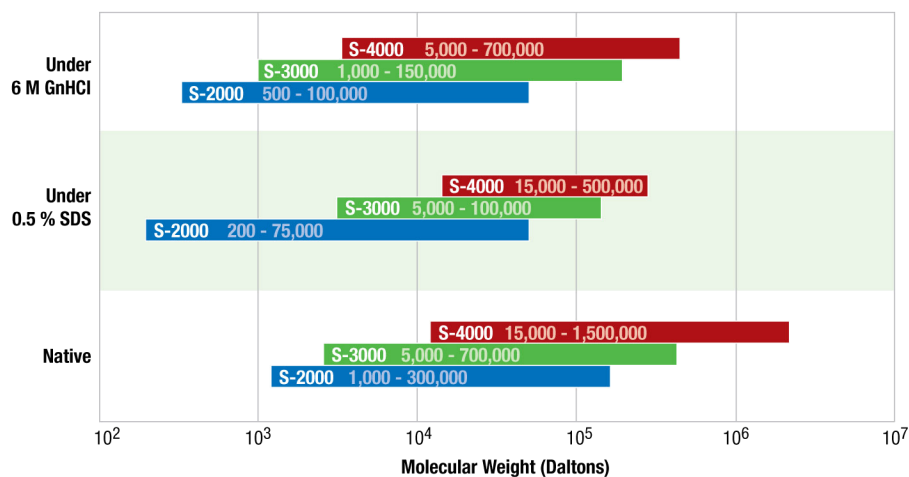


Easy Column Selection

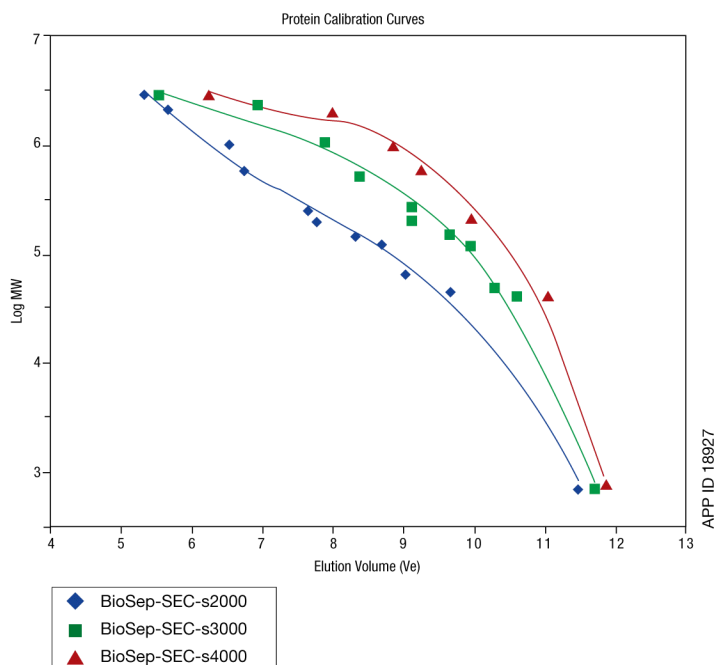
Molecular Weight Separation Ranges

3 BioSep phase options to separate samples of varying molecular weight (MW) ranges: 2000, 3000, 4000, as described below:



MW Calibration Curves for Protein Separation

- Utilize calibration curves to help guide your column selection
- Low to High MW



Conditions for all columns:

Columns: BioSep-SEC-s2000
BioSep-SEC-s3000
BioSep-SEC-s4000

Dimensions: 300 x 7.8mm

Mobile Phase: 100mM Sodium Phosphate pH 7.0,
300mM Sodium Chloride

Flow Rate: 1 mL/min

Temperature: Ambient

Detection: UV @ 280 nm

- Samples:**
1. IgM 900 kDa
 2. Thyroglobulin 669 kDa
 3. IgA 300 kDa
 4. IgG 156 kDa
 5. Transferrin 80 kDa
 6. BSA 66 kDa
 7. Ovalbumin 45 kDa
 8. β -Lactoglobulin 35 kDa
 9. Myoglobin 16.9 kDa
 10. Ribonuclease A 13.7 kDa
 11. Uridine 244 Da

Calibration curves are used to identify the MW of an unknown analyte and/or to select the appropriate column phase based on the ideal linear MW range for analytes of interest. If you need assistance using these curves, please contact your Phenomenex Technical Consultant.