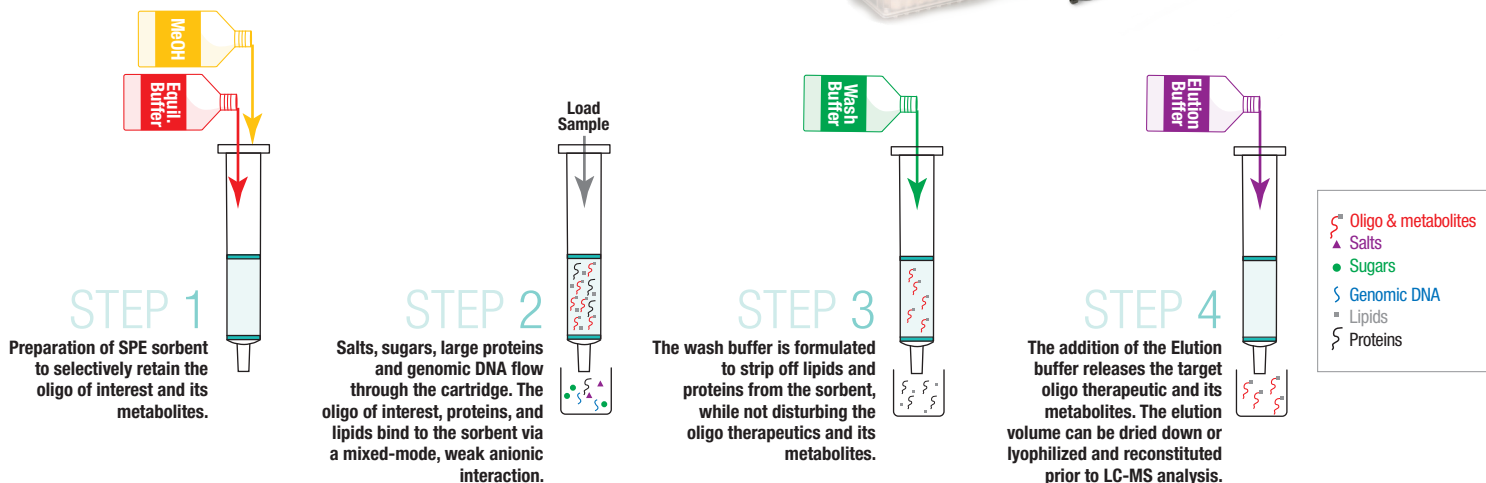


Clarity OTX Solid Phase Extraction

Quick, Simple SPE Method with Clean and Reliable Results for Oligonucleotides



Easy and Rapid SPE Method



Diverse Samples

Oligo Types

- DNA
- Aptamers
- RNAi/siRNA
- Thioates
- Lipid-conjugates
- Liposome encapsulated

Sample Types

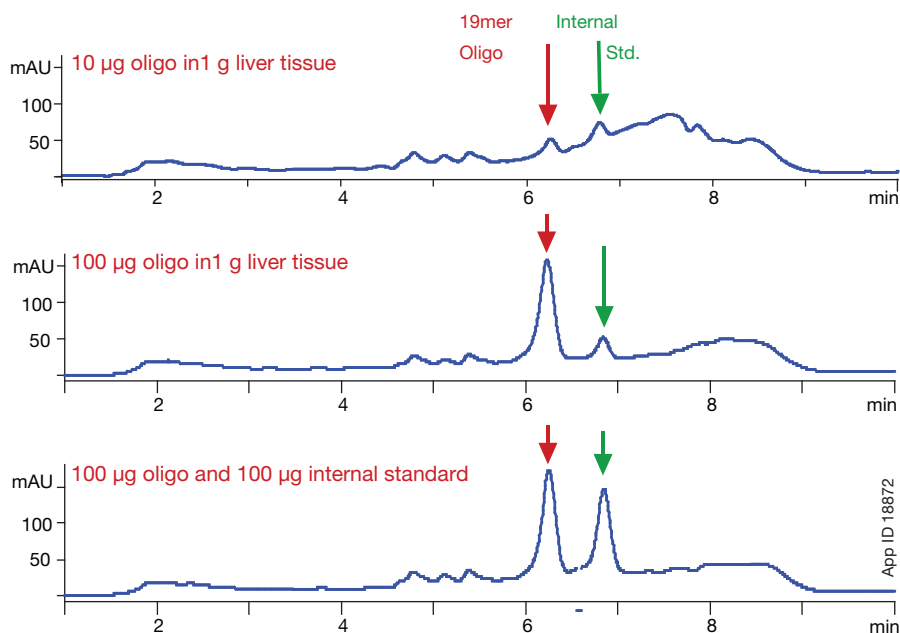
- Plasma
- Serum
- Urine
- Tears
- Saliva
- Tissue

Formats

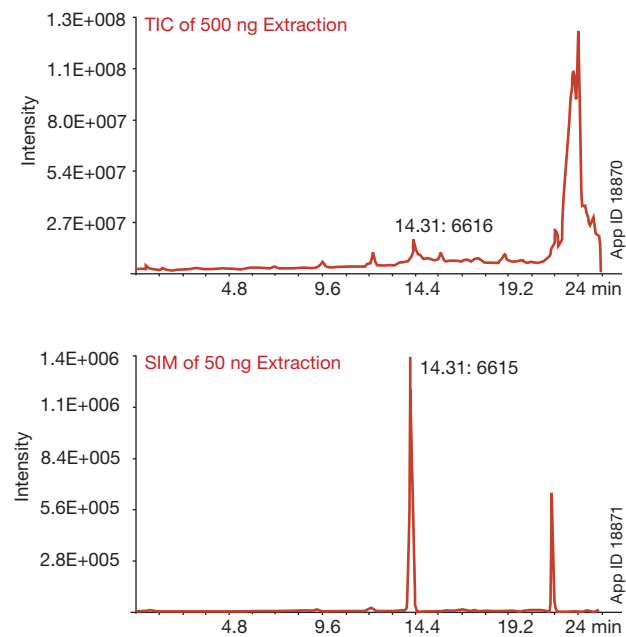
- 3 mL and 6 mL tubes
- 96-well plates
- 96-well microelution plates

Low Limits of Detection with Good Results

Sensitivity Study in Live Tissue



Sensitivity Study in Plasma



Trademarks
Clarity is registered trademark and OTX is a trademark of Phenomenex.
FOR RESEARCH USE ONLY. Not for use in clinical diagnostic procedures.



www.phenomenex.com/ClarityOTX
for new applications and technical notes

FL77361120_W