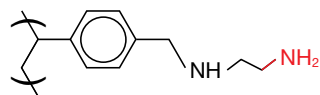


## Strata™-XL-AW General Method for the Extraction of Any Acid

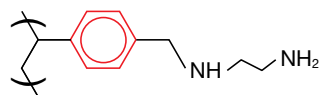
Strata-XL-AW is a novel polymeric, large particle, weak anion exchange sorbent that couples a hydrophobic backbone with a diamino ligand containing both a primary and secondary amine.

This sorbent retains analytes by several different mechanisms:

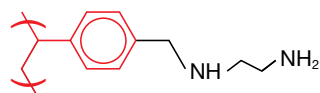
### Weak Anion Exchange



### $\pi$ - $\pi$ Bonding



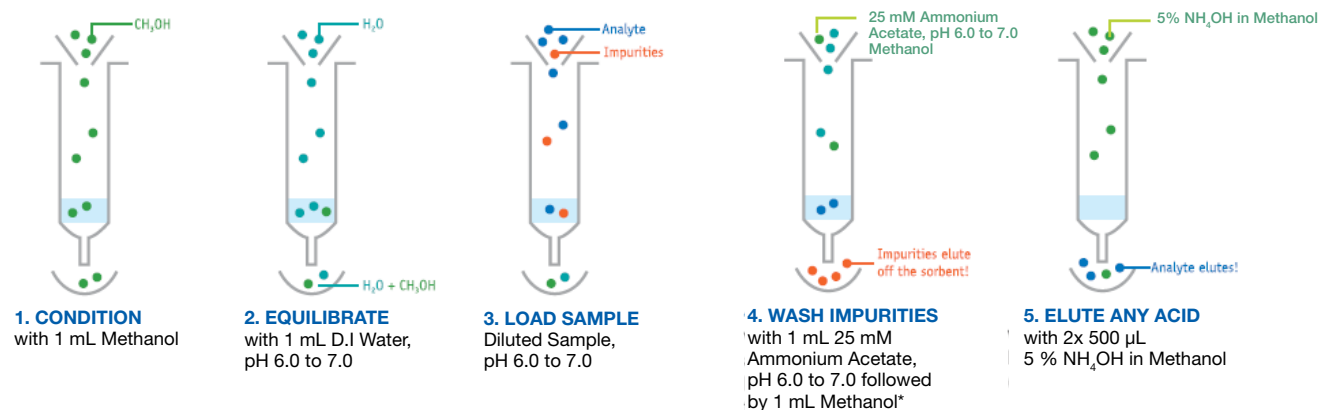
### Hydrophobic Interaction



The retention mechanism of Strata-XL-AW is effective for the extraction of both strongly and weakly acidic compounds. Strong acids can be eluted by neutralizing the sorbent while weak acids are eluted by neutralizing the acidic analytes.

### Strata-XL-AW Method for All Acidic Compounds

Note: Method uses solvent volumes appropriate for a 30 mg sorbent mass. For larger or smaller masses, refer to Technical Note TN-013.



\*The methanol wash serves to remove endogenous contaminants from biological sample matrices and reduces ion suppression in LC/MS under ESI mode. This fraction will contain neutrals and bases.

**Australia**

t: 02-9428-6444  
 f: 02-9428-6445  
 auinfo@phenomenex.com

**Austria**

t: 01-319-1301  
 f: 01-319-1300  
 anfrage@phenomenex.com

**Belgium**

t: +31 (0)30-2418700  
 f: +31 (0)30-2383749  
 beinfo@phenomenex.com

**Canada**

t: (800) 543-3681  
 f: (310) 328-7768  
 info@phenomenex.com

**Denmark**

t: 4824 8048  
 f: 4810 6265  
 nordicinfo@phenomenex.com

**Finland**

t: (09)4789 0063  
 f: +45 4810 6265  
 nordicinfo@phenomenex.com

**France**

t: 01 30 09 21 10  
 f: 01 30 09 21 11  
 franceinfo@phenomenex.com

**Germany**

t: 06021-58830-0  
 f: 06021-58830-11  
 anfrage@phenomenex.com

**Ireland**

t: 01 247 5405  
 f: +44 1625-501796  
 eireinfo@phenomenex.com

**Italy**

t: 051 6327511  
 f: 051 6327555  
 italiainfo@phenomenex.com

**Luxembourg**

t: +31 (0)30-2418700  
 f: +31 (0)30-2383749  
 nlinfo@phenomenex.com

**Mexico**

t: (55) 5018 3791  
 f: (310) 328-7768  
 tecnicomx@phenomenex.com

**Netherlands**

t: 030-2418700  
 f: 030-2383749  
 nlinfo@phenomenex.com

**New Zealand**

t: 09-4780951  
 f: 09-4780952  
 nzinfo@phenomenex.com

**Norway**

t: 81 00 20 05  
 f: +45 4810 6265  
 nordicinfo@phenomenex.com


**Puerto Rico**

t: (800) 541-HPLC  
 f: (310) 328-7768  
 info@phenomenex.com

**United Kingdom**

t: 01625-501367  
 f: 01625-501796  
 ukinfo@phenomenex.com

**All other countries:**

**Corporate Office USA**   
 t: (310) 212-0555  
 f: (310) 328-7768  
 info@phenomenex.com

**www.phenomenex.com**

Phenomenex products are available worldwide. For the distributor in your country, contact Phenomenex USA, International Department at international@phenomenex.com

**Strata™-XL-AW Ordering Information**

Sorbent Mass	Part No.	Unit
<b>Tube</b>		
30 mg	8B-S051-TAK	1 mL (100/box)
60 mg	8B-S051-UBJ	3 mL (50/box)
100 mg	8B-S051-EBJ	3 mL (50/box)
100 mg	8B-S051-ECH	6 mL (30/box)
100 mg	8B-S051-ECL	6 mL (200/box)
200 mg	8B-S051-FBJ	3 mL (50/box)
200 mg	8B-S051-FCH	6 mL (30/box)
500 mg	8B-S051-HBJ	3 mL (50/box)
500 mg	8B-S051-HCH	6 mL (30/box)
<b>Giga™ Tube</b>		
2 g	8B-S051-KDG	12 mL (20/box)
2 g	8B-S051-KEG	20 mL (20/box)
5 g	8B-S051-LEG	20 mL (20/box)
5 g	8B-S051-LFF	60 mL (16/box)
10 g	8B-S051-MFF	60 mL (16/box)
<b>96-Well Plate</b>		
30 mg	8E-S051-TGB	2 Plates/Box

Additional sizes available. Contact your Phenomenex Sample Preparation Specialist for additional information.

Contact your Sample Preparation Specialist for applications, method development support, and free samples of Strata™-X SPE tubes!



If Strata<sup>®</sup> SPE products do not perform as well or better than your current SPE product of similar phase, mass and size, return the product with comparative data within 45 days for a FULL REFUND.

**Terms and Conditions**

Subject to Phenomenex Standard Terms and Conditions which may be viewed at <http://www.phenomenex.com/TermsAndConditions>.

**Trademarks**

Strata is a registered trademark of Phenomenex, Inc.  
 Strata-X and Giga are trademarks of Phenomenex, Inc.

**Disclaimer**

The general method is a convenient starting point for SPE method development. Further optimization may be required to tailor the method to your specific needs.

Strata-X is patented by Phenomenex.

© 2010 Phenomenex, Inc. All rights reserved.