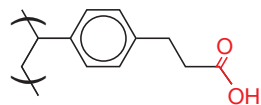


Strata™-XL-CW General Method for the Extraction of Weak Bases

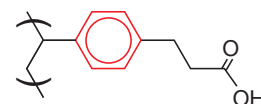
Strata-XL-CW is a novel polymeric, large particle, weak cation exchange sorbent that couples a hydrophobic backbone with a carboxylic acid functional group.

This sorbent retains analytes by several different mechanisms:

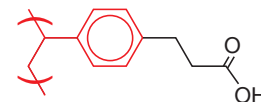
Weak Cation Exchange



π - π Bonding



Hydrophobic Interaction



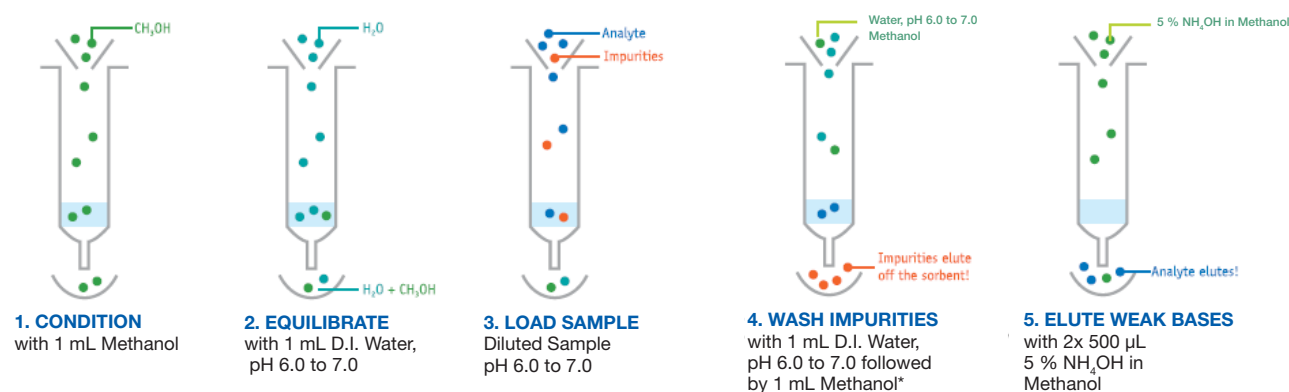
The below method is suitable for weak bases such as primary (1°), secondary (2°), and tertiary (3°) amines where elution with basic pH is desired in order to neutralize the analyte of interest. The ammoniated organic elution solvent is volatile and readily evaporated allowing the analytes to be reconstituted in any desired solvent.

For proper retention, it is necessary to load the samples within the pH range of pH 6.0 to 7.0.

Strata-XL-CW Method for Weakly Basic Compounds (1°, 2°, and 3° amines)

Note: Method uses solvent volumes appropriate for a 30 mg sorbent mass. For larger or smaller masses, refer to Technical Note TN-013.

Very Important: This method is NOT suitable for the extraction of strongly basic (cationic) compounds such as organic quaternary (4°) amines. Please follow the method entitled "Strata-XL-CW General Method for the Extraction of Any Base" (Technical Note TN-0033) which uses an acidic elution method.



*The methanol wash serves to remove endogenous contaminants from biological sample matrices and reduces ion suppression in LC/MS under ESI mode. This fraction will contain neutrals and acids.

TN-0034

GENERAL METHODS

Australia

t: 02-9428-6444
f: 02-9428-6445
auinfo@phenomenex.com

Austria

t: 01-319-1301
f: 01-319-1300
anfrage@phenomenex.com

Belgium

t: +31 (0)30-2418700
f: +31 (0)30-2383749
beinfo@phenomenex.com

Canada

t: (800) 543-3681
f: (310) 328-7768
info@phenomenex.com

Denmark

t: 4824 8048
f: 4810 6265
nordicinfo@phenomenex.com

Finland

t: (09)4789 0063
f: +45 4810 6265
nordicinfo@phenomenex.com

France

t: 01 30 09 21 10
f: 01 30 09 21 11
franceinfo@phenomenex.com

Germany

t: 06021-58830-0
f: 06021-58830-11
anfrage@phenomenex.com

Ireland

t: 01 247 5405
f: +44 1625-501796
eireinfo@phenomenex.com

Italy

t: 051 6327511
f: 051 6327555
italiainfo@phenomenex.com

Luxembourg

t: +31 (0)30-2418700
f: +31 (0)30-2383749
nlinfo@phenomenex.com

Mexico

t: (55) 5018 3791
f: (310) 328-7768
tecnicomx@phenomenex.com

The Netherlands

t: 030-2418700
f: 030-2383749
nlinfo@phenomenex.com

New Zealand

t: 09-4780951
f: 09-4780952
nzinfo@phenomenex.com

Norway

t: 81 00 20 05
f: +45 4810 6265
nordicinfo@phenomenex.com

Puerto Rico

t: (800) 541-HPLC
f: (310) 328-7768
info@phenomenex.com

United Kingdom

t: 01625-501367
f: 01625-501796
ukinfo@phenomenex.com

All other countries: Corporate Office USA 

t: (310) 212-0555
f: (310) 328-7768
info@phenomenex.com

www.phenomenex.com

Phenomenex products are available worldwide. For the distributor in your country, contact Phenomenex USA, International Department at international@phenomenex.com

Strata™ -XL-CW Ordering Information

Sorbent Mass	Part No.	Unit
Tube		
30 mg	8B-S052-TAK	1 mL (100/box)
60 mg	8B-S052-UBJ	3 mL (50/box)
100 mg	8B-S052-EBJ	3 mL (50/box)
100 mg	8B-S052-ECH	6 mL (30/box)
200 mg	8B-S052-FBJ	3 mL (50/box)
200 mg	8B-S052-FCH	6 mL (30/box)
500 mg	8B-S052-HBJ	3 mL (50/box)
500 mg	8B-S052-HCH	6 mL (30/box)
Giga™ Tube		
2 g	8B-S052-KDG	12 mL (20/box)
2 g	8B-S052-KEG	20 mL (20/box)
5 g	8B-S052-LEG	20 mL (20/box)
5 g	8B-S052-LFF	60 mL (16/box)
10 g	8B-S052-MFF	60 mL (16/box)
96-Well Plate		
30 mg	8E-S052-TGB	2 Plates/Box

Additional sizes available. Contact your Phenomenex Sample Preparation Specialist for additional information.

Contact your Sample Preparation Specialist for applications, method development support, and free samples of Strata-X SPE tubes!



If Strata® SPE products do not perform as well or better than your current SPE product of similar phase, mass and size, return the product with comparative data within 45 days for a FULL REFUND.

Terms and Conditions

Subject to Phenomenex Standard Terms and Conditions which may be viewed at <http://www.phenomenex.com/TermsAndConditions>.

Trademarks

Strata is a registered trademark of Phenomenex, Inc. Strata-X and Giga are trademarks of Phenomenex, Inc.

Disclaimer

The general method is a convenient starting point for SPE method development. Further optimization may be required to tailor the method to your specific needs.

Strata-X is patented by Phenomenex.

© 2010 Phenomenex, Inc. All rights reserved.