



TN-0150

Quantitation of Pain Panel Analytes from Oral Fluid Utilizing Microelution Solid Phase Extraction Coupled with LC-MS/MS

Shahana Wahab Huq, Danny Buchan, and Bryan Tackett, PhD
Phenomenex, Inc., 411 Madrid Ave., Torrance, CA 90501 USA

Introduction

Oral fluid has emerged as a popular biological matrix for analysis due to its non-invasive nature and ease of sample collection. It has wide applicability for drug testing and screening in clinical research. However, the analysis of these compounds in oral fluid becomes challenging due to the presence of the excipients, surfactants, and preservatives in the collection buffer of commercially available oral fluid collection (OFC) devices. These additives are necessary to ensure the stability and authenticity of the sample during collection and transport. However, the presence of these additives can foul the optics of the mass spectrometer and diminish the signal response if the samples are not cleaned up adequately before injection. In this technical note, we present an effective sample cleanup method for oral fluid analysis that targets 32 pain panel analytes, utilizing a mixed mode strong cation exchange Strata™-X-C microelution 96-well plate. A Kinetex™ core-shell 2.6 μm Biphenyl, 50 x 4.6 mm column was employed for fast chromatographic separation.

Sample Preparation

Pretreatment: Drug-free human saliva was spiked (concentration used as per Table 1 and 2) with standards. 1 mL of oral fluid was pipetted onto the cellulose pad and allowed to absorb until the indicator window turned blue. The saturated pad was placed into a transport tube containing buffer solution and allowed to sit overnight. The plastic nipple at the end of transport tube was removed, and the tube was placed in a centrifuge at 6000 rpm for 10 minutes. The supernatant was collected.

Condition: Strata-X-C, 2 mg/well 96-well microelution plate (8M-S029-4GA) with 200 μL Methanol

Equilibrate: Plate with 200 μL Water

Load: 150 μL supernatant diluted with 150 μL 1 % Formic Acid in Water

Wash 1: With 200 μL Water

Wash 2: With 200 μL 50 % Acetone in 1 % Formic Acid

Dry down 1: For 30 sec at high vacuum (15-20 in. Hg)

Elute: With 2 washes of 50 μL Methanol / Acetonitrile / Ammonium Hydroxide (5:5:2, v/v/v)

Dry down 2: Evaporate to dryness under a gentle stream of Nitrogen at 40-45 °C

Reconstitute: With 100 μL initial mobile phase

LC Conditions – Quantitative Analysis for Pain Panel Analytes

Column: Kinetex 2.6 μm Biphenyl

Dimension: 50 x 4.6 mm

Part No.: [00B-4622-E0](#)

Mobile Phase: A: 10 mM Ammonium Formate
B: Methanol

Gradient:	Time (min)	%B
	0	15
	1	70
	3	95
	5.5	85
	5.51	15
	7	15

Flow Rate: 0.6 mL/min

Injection Volume: 5 μL

Temperature: Ambient

LC System: Agilent® 1260 Infinity

Detection: MS/MS

Detector: SCIEX® 4500 Triple Quad™

LC Conditions – Qualitative Q1 Scan (200-2000m/z)

Column: Kinetex 2.6 μm C18

Dimension: 50 x 2.1 mm

Part No.: [00B-4462-AN](#)

Mobile Phase: A: 0.1 % Formic acid in water
B: 0.1 % Formic acid in Methanol

Gradient:	Time (min)	%B
	0	10
	5	95
	6.5	95
	6.51	10
	8	10

Flow Rate: 0.5 mL/min

Injection Volume: 1 μL

Temperature: Ambient

LC System: Agilent 1260 Infinity

Detection: MS/MS

Detector: SCIEX 4500 Triple Quad

MS/MS Conditions

Ion Source: ESI

Polarity: Positive

Source Temperature: 650 °C

GS1: 70

GS2: 70

CUR: 25

IS: 5000



Shahana W. Huq

Shahana Huq is a Senior Application Scientist focusing on Clinical Research and Sample Preparation, within the PhenoLogix applications lab at Phenomenex. She works closely with customers providing technical support and consultation as well as webinars and onsite seminars. She has been working for Phenomenex since the year 2000.



Results and Discussion

The Kinetex™ 2.6 µm Biphenyl column provides fast chromatographic separation and good selectivity for critical isomeric (codeine/hydrocodone, morphine/hydromorphone, 6-Monoacetylmorphine/Naloxone) pairs (**Table 1**). To remove the harmful effect of the components of the OFC device on the LC-MS/MS, an aggressive organic wash was necessary. The prescribed SPE method resulted in a clean oral fluid extract with minimal interference as observed in the Q1 scan monitored from 200 to 2000 Da (**Figure 2**). A qualitative matrix effect experiment by post-column infusion was conducted. Upon continuous infusion of codeine, multiple suppression zones were revealed for the injection of unextracted preservative buffer. The microelution SPE successfully removed most of those interferences that were responsible for ion suppression (**Figure 3**).

The QC samples for replicate extraction at 3 different concentration levels showed precision and accuracy data between 1.4 to 20.3 % and 80 to 118 %, respectively, which are within acceptable industry standards (**Table 2**). The dynamic range of this method was tested with seven calibrators over a 300-fold concentration range with linearity values of $R^2 \geq 0.995$ (**Figure 4, Table 1**). The simplified microelution sample extraction method provides the ideal combination of automatability and high throughput with minimum solvent usage.

Table 1. MRM Transitions and Linearity Data for 32 Pain Panel Analytes Extracted from Oral Fluid Using the Strata™-X-C 96-well Microelution Plate

Analyte Name	RT (min)	Reference conc. (ng/mL)	Q1 (m/z)	Q3 (m/z)	Linearity Range (ng/mL)	Linear regression (R ²)
Hydroxalprazolam	4.1	100	325.1	297	1-300	0.998
Amphetamine	2.8	500	136.1	91.1	5-1500	0.999
Benzoylcegonine	2.8	150	290.1	168.1	1.5-450	0.999
Codeine	3.8	100	300.2	152.1	1-300	0.999
Diazepam	4.6	100	285	193.2	1-300	0.998
Methylenedioxy-methamphetamine (MDMA)	3.2	250	194.1	105.1	2.5-750	0.999
Methamphetamine	2.99	500	150.1	91	5-1500	0.998
Oxymorphone	3.3	100	302.1	227	1-300	0.997
Phencyclidine (PCP)	4.9	25	244.3	91	0.25-75	0.999
Sufentanil	4.9	3	387.2	238.1	0.03-9	0.995
6-Monoacetylmorphine	3.5	10	328.1	165.1	0.1-30	0.998
Clonazepam	3.8	100	316.1	270.1	1-300	0.995
2-Ethylidene-1,5-dimethyl-3,3-diphenylpyrrolidine (EDDP)	5.2	100	278.2	234.2	1-300	0.997
Fentanyl	4.6	3	337.3	105.1	0.03-9	0.998
Flunitrazepam	4.3	100	314.1	268.2	1-300	0.998
Flurazepam	4.7	100	388.2	315.2	1-300	0.996
Hydrocodone	4.2	100	300.2	199	1-300	0.999
Hydromorphone	3.4	100	286.1	185.1	1-300	0.999
3,4-Methylenedioxymethamphetamine (MDA)	2.9	250	180.1	133	2.5-750	0.999
Methyl diethanolamine (MDEA)	3.2	250	208.2	163	2.5-750	0.998
Meperidine	3.9	250	248.2	220.2	2.5-750	0.999
Methadone	5.4	100	310	265	1-300	0.999
Midazolam	4.5	100	326.1	291.1	1-300	0.999
Morphine-	3.1	100	286.1	152.1	1-300	0.997
Naloxone	4.17	100	328.2	212	1-300	0.995
Naltrexone	4.19	100	342.2	267.1	1-300	0.996
Nordiazepam	4.15	100	271	140	1-300	0.997
Normeperidine	3.5	100	234.1	160.1	1-300	0.995
Oxycodone	4.2	100	316.1	241.2	1-300	0.999
Temazepam	4.3	100	301.1	255.1	1-300	0.996
Tramadol	3.5	100	264.1	58.1	1-300	0.999
Cocaine	4.2	100	304.2	150	1-300	0.998



Figure 1. Representative Chromatogram of 32 Pain Panel Analytes Extracted from Oral Fluid Matrix Utilizing a Kinetex™ 2.6 μm Biphenyl Column

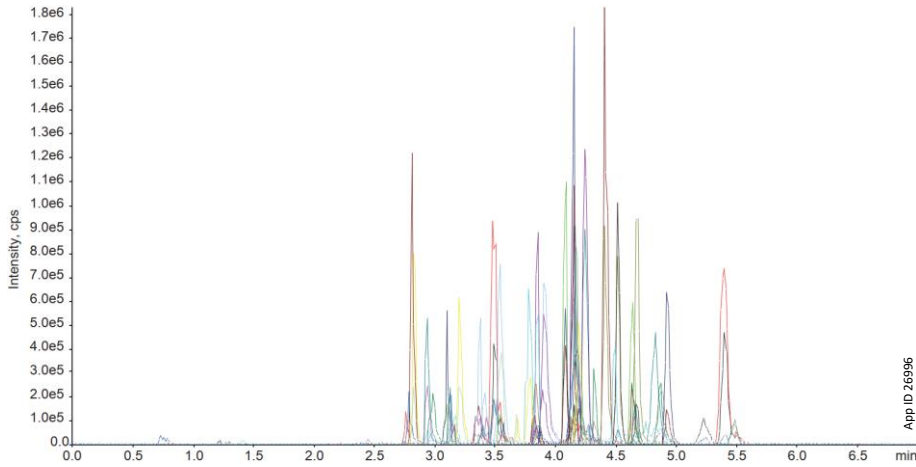


Figure 2. Representative Q1 Scan Comparison for Extracted Oral Fluid Sample Before and After SPE Cleanup

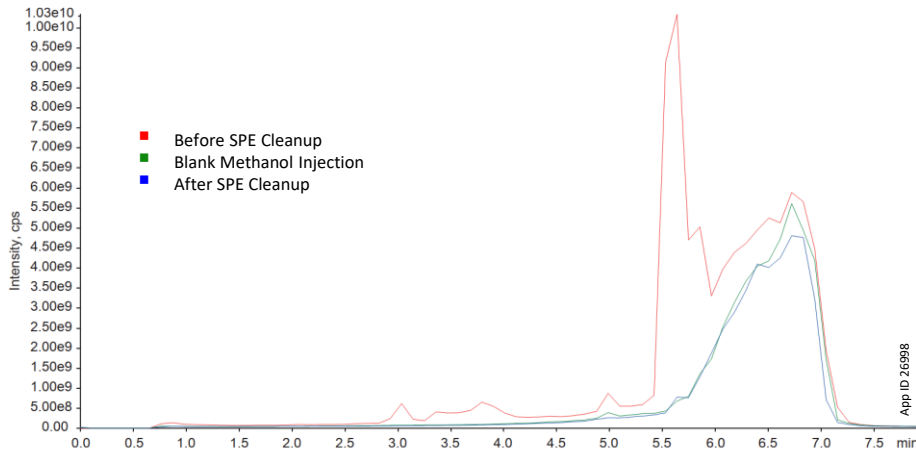


Figure 3. Representative Chromatogram Obtained from Post Column Infusion of Codeine, for an Extracted Oral Fluid Sample Before and After SPE Cleanup

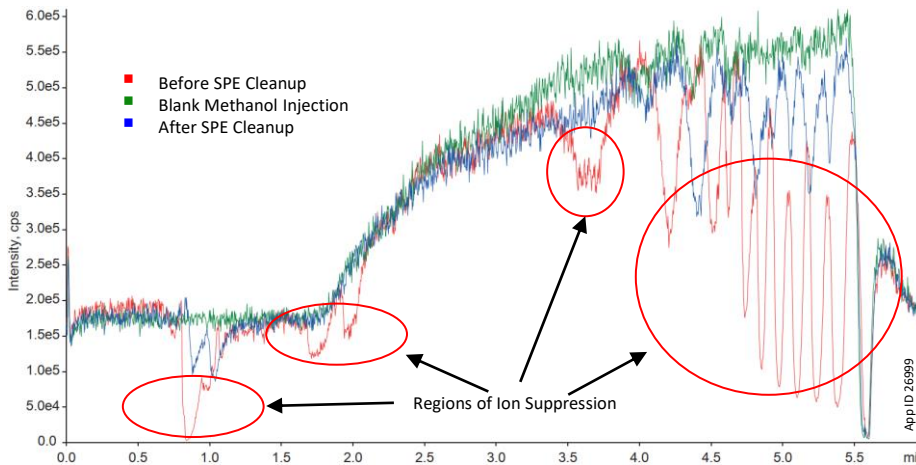


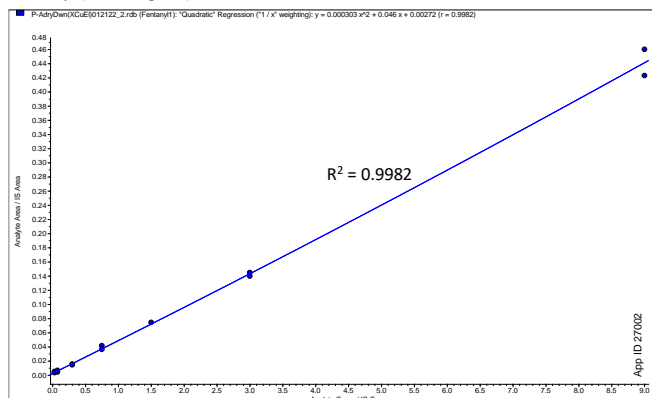
Table 2. Precision and Accuracy Data for 32 Pain Panel Analytes Extracted from Oral Fluid Using the Strata™-X-C 96-well Microelution Plate

Analyte Name	QC-1 (5% of Reference) (ng/mL)		QC-2 (40% of Reference) (ng/mL)		QC-3 (2x Reference) (ng/mL)	
	% Accuracy	% CV (N=4)	% Accuracy	% CV (N=4)	% Accuracy	% CV (N=4)
Hydroxalprazolam	104.2	6.4	105.9	7.4	108.4	13.1
Amphetamine	103.7	13.5	99.3	5.2	94	6.2
Benzoyllecgonine	111.3	11.3	114.3	13.4	105.5	2.9
Codeine	108.9	12.3	108.6	6.2	103.2	3.3
Diazepam	101.3	6.2	105.3	9.9	104.9	9.9
Methylenedioxy-methamphetamine (MDMA)	109.4	10.1	99.8	4.7	99.9	2.2
Methamphetamine	99.1	6.4	95.6	3.7	93.4	3.6
Oxymorphone	106.8	5.3	109	7	100.6	4.8
Phencyclidine (PCP)	95	4.8	100.3	7.6	97	1.5
Sufentanil	103.9	18.1	118.1	10.9	89.6	11.3
6-Monoacetylmorphine	99.3	16.7	104.9	4.3	103.8	4.2
Clonazepam	108.3	16.4	99.6	11	95.2	7
2-Ethylidene-1,5-dimethyl-3,3-diphenylpyrrolidine (EDDP)	114.3	15.6	99.8	12.8	105.4	10.9
Fentanyl	107.4	14.9	117	8.8	98.8	1.9
Flunitrazepam	107.3	18.1	113	15.6	115	10.2
Flurazepam	98.5	20.3	114.4	14.9	117.8	1.9
Hydrocodone	112.4	8.8	107.4	7.4	95.7	1.8
Hydromorphone	116.3	13.5	112.9	3.4	108.7	1.6
3,4-Methylenedioxymethamphetaminen (MDA)	100	6.7	109.4	4.9	94.9	5.3
Methyl diethanolamine (MDEA)	110.8	10.6	102.3	4.5	101.1	5.4
Meperidine	91.6	15.3	98.6	3.4	91.3	3.2
Methadone	86.5	9.3	89.5	9	92.5	5.9
Midazolam	12.2	13	111.1	7.6	105.7	8.5
Morphine	102.6	7.1	102.5	4.3	93.9	5.3
Naloxone	113.5	19.3	102.7	14.9	98.7	6
Naltrexone	105.2	8.5	109	10.2	97.6	6.5
Nordiazepam	93.6	14.5	118	15.5	97.1	14.4
Normeperidine	80.8	18.3	90.2	13.2	95.2	11.2
Oxycodone	115.5	5.1	112.1	8.1	97.9	1.4
Temazepam	96.1	10.7	116.9	11.2	109.3	12.5
Tramadol	92.3	9.6	109.1	10.3	85	3
Cocaine	102.7	5.3	114.8	7.7	91	15.1

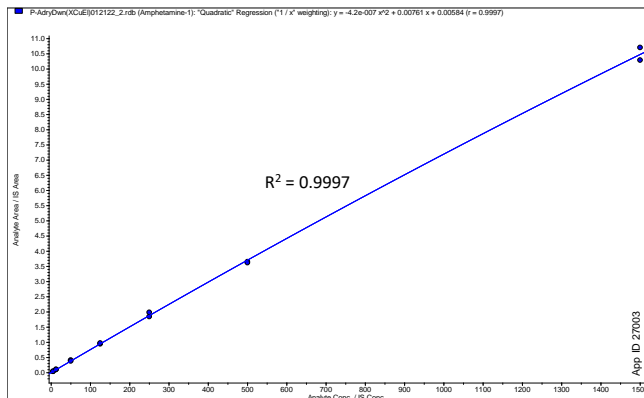


Figure 4. Linearity Curves for Selected Analytes in an Oral Fluid Sample Extracted Using a Strata™-X-C, 96-well Microelution Plate Over a 300-fold Dynamic Concentration Range

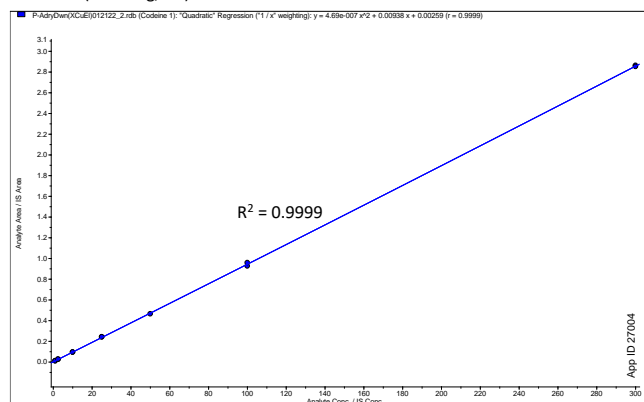
Fentanyl (0.03-9 ng/mL)



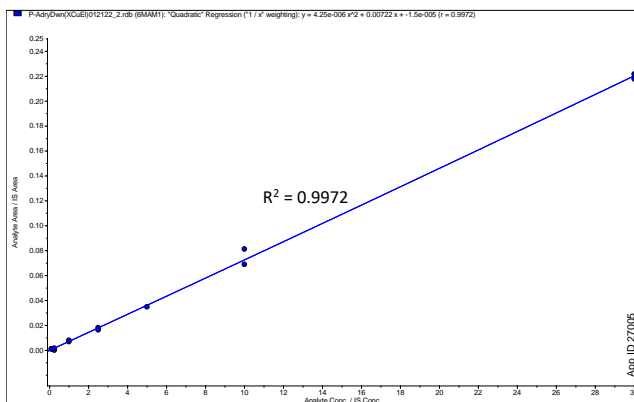
Amphetamine (5-1500 ng/mL)



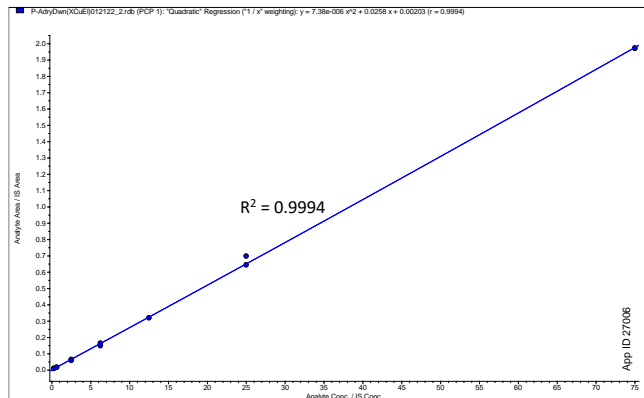
Codeine (1-300 ng/mL)



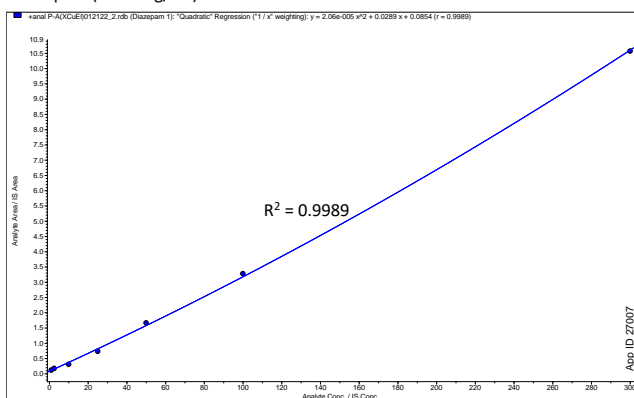
6-Monoacetylmorphine (0.1-30 ng/mL)



Phencyclidine (0.25-75 ng/mL)



Diazepam (1-300 ng/mL)



Conclusion

The prescribed sample prep method utilizing microelution SPE resulted in a simple, rapid extraction for identification and quantitation of 32 pain panel analytes from oral fluid which is cost effective and can efficiently be incorporated in clinical workflow analysis.



Kinetex™ Ordering Information

2.6 µm Analytical Columns (mm)				SecurityGuard™ ULTRA Cartridges (mm)‡			
Phases	30 x 4.6	50 x 4.6	75 x 4.6	100 x 4.6	150 x 4.6	250 x 4.6	3/pk
EVO C18	00A-4725-E0	00B-4725-E0	—	00D-4725-E0	00F-4725-E0	00G-4725-E0	AJ0-9296
PS C18	00A-4780-E0	00B-4780-E0	—	00D-4780-E0	00F-4780-E0	00G-4780-E0	AJ0-8949
Polar C18	00A-4759-E0	00B-4759-E0	—	00D-4759-E0	00F-4759-E0	—	AJ0-9530
Biphenyl	—	00B-4622-E0	—	00D-4622-E0	00F-4622-E0	—	AJ0-9207
XB-C18	—	00B-4496-E0	00C-4496-E0	00D-4496-E0	00F-4496-E0	—	AJ0-8768
C18	00A-4462-E0	00B-4462-E0	00C-4462-E0	00D-4462-E0	00F-4462-E0	—	AJ0-8768
C8	—	00B-4497-E0	00C-4497-E0	00D-4497-E0	00F-4497-E0	—	AJ0-8770
HILIC	—	00B-4461-E0	00C-4461-E0	00D-4461-E0	00F-4461-E0	—	AJ0-8772
Phenyl-Hexyl	—	00B-4495-E0	00C-4495-E0	00D-4495-E0	00F-4495-E0	—	AJ0-8774
F5	00A-4723-E0	00B-4723-E0	—	00D-4723-E0	00F-4723-E0	—	AJ0-9230

for 4.6 mm ID

2.6 µm Minibore Columns (mm)			SecurityGuard ULTRA Cartridges (mm)‡			
Phases	30 x 2.1	50 x 2.1	75 x 2.1	100 x 2.1	150 x 2.1	3/pk
EVO C18	00A-4725-AN	00B-4725-AN	—	00D-4725-AN	00F-4725-AN	AJ0-9298
PS C18	00A-4780-AN	00B-4780-AN	—	00D-4780-AN	00F-4780-AN	AJ0-8951
Polar C18	00A-4759-AN	00B-4759-AN	—	00D-4759-AN	00F-4759-AN	AJ0-9532
Biphenyl	00A-4622-AN	00B-4622-AN	—	00D-4622-AN	00F-4622-AN	AJ0-9209
XB-C18	00A-4496-AN	00B-4496-AN	00C-4496-AN	00D-4496-AN	00F-4496-AN	AJ0-8782
C18	00A-4462-AN	00B-4462-AN	00C-4462-AN	00D-4462-AN	00F-4462-AN	AJ0-8782
C8	00A-4497-AN	00B-4497-AN	00C-4497-AN	00D-4497-AN	00F-4497-AN	AJ0-8784
HILIC	00A-4461-AN	00B-4461-AN	00C-4461-AN	00D-4461-AN	00F-4461-AN	AJ0-8786
Phenyl-Hexyl	00A-4495-AN	00B-4495-AN	00C-4495-AN	00D-4495-AN	00F-4495-AN	AJ0-8788
F5	00A-4723-AN	00B-4723-AN	—	00D-4723-AN	00F-4723-AN	AJ0-9322

for 2.1 mm ID

‡ SecurityGuard ULTRA Cartridges require holder, Part No.: [AJ0-9000](#)



Need a different column size or sample preparation format?

No problem! We have a majority of our available dimensions up on www.phenomenex.com, but if you can't find what you need right away, our super helpful Technical Specialists can guide you to the solution via our online chat portal www.phenomenex.com/Chat.

Australia

t: +61 (0)2-9428-6444
auinfo@phenomenex.com

Austria

t: +43 (0)1-319-1301
anfrage@phenomenex.com

Belgium

t: +32 (0)2 503 4015 (French)
t: +32 (0)2 511 8666 (Dutch)
beinfo@phenomenex.com

Canada

t: +1 (800) 543-3681
info@phenomenex.com

China

t: +86 400-606-8099
cninfo@phenomenex.com

Czech Republic

t: +420 272 017 077
cz-info@phenomenex.com

Denmark

t: +45 4824 8048
nordicinfo@phenomenex.com

Finland

t: +358 (0)9 4789 0063
nordicinfo@phenomenex.com

France

t: +33 (0)1 30 09 21 10
franceinfo@phenomenex.com

Germany

t: +49 (0)6021-58830-0
anfrage@phenomenex.com

Hong Kong

t: +852 6012 8162
hkinfo@phenomenex.com

India

t: +91 (0)40-3012 2400
indiainfo@phenomenex.com

Indonesia

t: +62 21 5010 9707
indoinfo@phenomenex.com

Ireland

t: +353 (0)1 247 5405
eireinfo@phenomenex.com

Italy

t: +39 051 6327511
italiainfo@phenomenex.com

Japan

t: +81 (0) 120-149-262
jpinfo@phenomenex.com

Luxembourg

t: +31 (0)30-2418700
nlinfo@phenomenex.com

Mexico

t: 01-800-844-5226
tecnicomx@phenomenex.com

The Netherlands

t: +31 (0)30-2418700
nlinfo@phenomenex.com

New Zealand

t: +64 (0)9-4780951
nzinfo@phenomenex.com

Norway

t: +47 810 02 005
nordicinfo@phenomenex.com

Poland

t: +48 22 104 21 72
pl-info@phenomenex.com

Portugal

t: +351 221 450 488
ptinfo@phenomenex.com

Singapore

t: +65 800-852-3944
sginfo@phenomenex.com

Slovakia

t: +420 272 017 077
sk-info@phenomenex.com

Spain

t: +34 91-413-8613
espinfo@phenomenex.com

Sweden

t: +46 (0)8 611 6950
nordicinfo@phenomenex.com

Switzerland

t: +41 (0)61 692 20 20
swissinfo@phenomenex.com

Taiwan

t: +886 (0) 0801-49-1246
twinfo@phenomenex.com

Thailand

t: +66 (0) 2 566 0287
thaiinfo@phenomenex.com

United Kingdom

t: +44 (0)1625-501367
ukinfo@phenomenex.com

USA

t: +1 (310) 212-0555
info@phenomenex.com

☉ All other countries/regions

Corporate Office USA
t: +1 (310) 212-0555
info@phenomenex.com

www.phenomenex.com

Phenomenex products are available worldwide. For the distributor in your country/region, contact Phenomenex USA, International Department at international@phenomenex.com

BE-HAPPY™
GUARANTEE

Your happiness is our mission. Take 45 days to try our products. If you are not happy, we'll make it right.

www.phenomenex.com/behappy

Terms and Conditions

Subject to Phenomenex Standard Terms and Conditions, which may be viewed at www.phenomenex.com/TermsAndConditions.

Trademarks

Strata, Kinetex, and BE-HAPPY are trademarks of Phenomenex. SCIEX is a registered trademark and Triple Quad is a trademark of AB SCIEX Pte. Ltd. Agilent is a registered trademark of Agilent Technologies, Inc.

Disclaimer

Comparative separations may not be representative of all applications. Phenomenex is in no way affiliated with Agilent Technologies, Inc. Strata-X is patented by Phenomenex. U.S. Patent No. 7,119,145.

FOR RESEARCH USE ONLY. Not for use in clinical diagnostic procedures.
© 2022 Phenomenex, Inc. All rights reserved.

