

Simplified Solid Phase Extraction Solutions



Strong Acids
($pK_a < 2$)

pp. 4-5

Weak Acids
($pK_a 2-4$)

pp. 6-7

Neutral Compounds

pp. 8-9

Weak Bases
($pK_a 8-10$)

pp. 10-11

Strong Bases
($pK_a > 10$)

pp. 12-13

Keep it Clean with Strata™ -X



Sample Preparation Specialists are Ready to Assist You

Two Levels of Method Development Support

Level: 1

Contact one of our dedicated SPE specialists for immediate method development assistance.



Level: 2

Send your sample to our analytical services group for custom method development.



“Our Sample Preparation Specialist became and remains our best resource for developing and optimizing methods.”

Eric Wenger
Golden Heritage Foods

Get Started




Contact Phenomenex:
info@phenomenex.com

Request a customized method:
www.phenomenex.com/info/spehelp



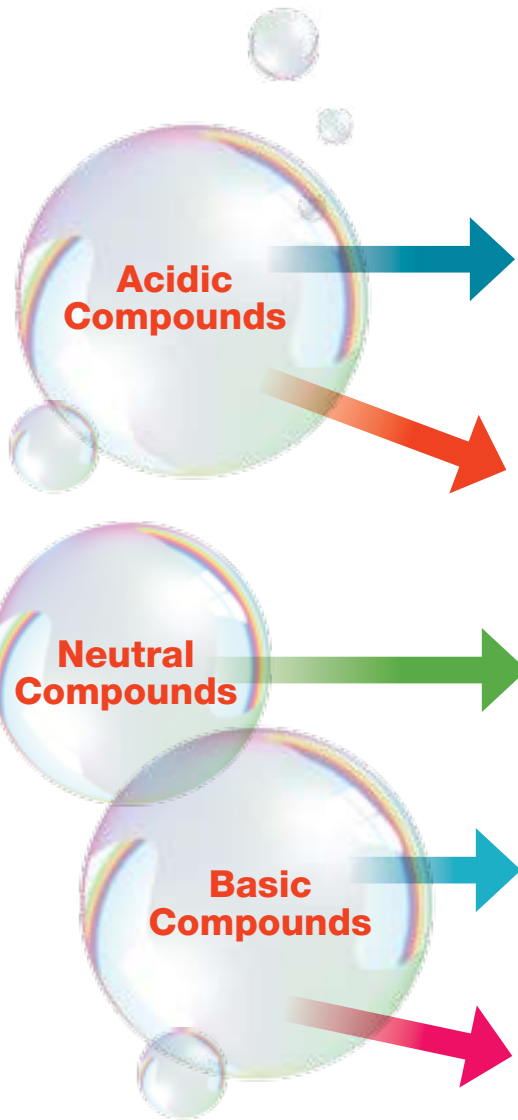
Find Your Solution



Clean and Simple
Extractions,
Guaranteed!

guarantee

If Strata™-X SPE products do not perform as well or better than your current SPE product of similar phase, mass and size, send in your comparative data within 45 days and keep the Strata-X SPE product for FREE!



pp. 4-5

Strong Acids
($pK_a < 2$)

pp. 6-7

Weak Acids
($pK_a 2-4$)

pp. 8-9

Neutral Compounds

pp. 10-11

Weak Bases
($pK_b 8-10$)

pp. 12-13

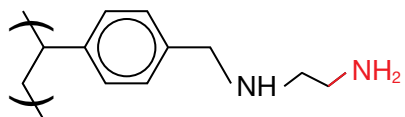
Strong Bases
($pK_b > 10$)

Simplify Your Strong Acid Extractions with Strata-X-AW or Strata-XL-AW

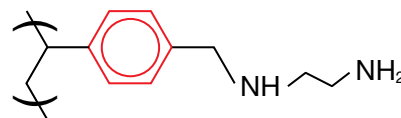
- Tightly retain strong acids without irreversibly binding them to the sorbent
- Achieve cleaner extracts by washing with 100 % organic
- Deconditioning resistant sorbent results in higher reproducibility as compared to silica-based sorbents

These Polymeric Sorbents Provide
3 Mechanisms of Retention

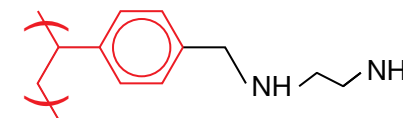
Weak Anion Exchange:
di-amino ligand



π - π Bonding



Hydrophobic Interaction



Step

1

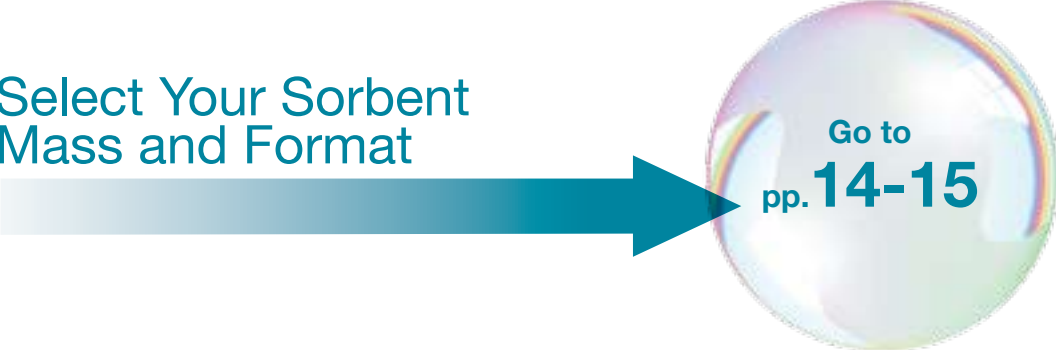
Select Your Particle and Pore Size

	Strata™ -X-AW, 33 μm , 85 \AA	Strata-XL-AW, 100 μm , 300 \AA
High Concentration Samples	✓	
Small Target Analytes (< 10 kDa)	✓	
Large Target Analytes (> 10 kDa)		✓
Large Volume Samples		✓
Viscous Samples		✓

Step

2

Select Your Sorbent Mass and Format



Go to
pp. 14-15

Step

3

Follow This Easy Protocol

Method written for a 30 mg/1 mL tube

Condition

1 mL Methanol followed by 1 mL D.I. Water

Load

Recommended volume of sample (pH 6-7) (see page 14)

Wash

1 mL 25 mM Ammonium acetate (pH 6-7) followed by 1 mL Methanol

Elute

2x 500 μL 5 % Ammonium hydroxide in Methanol or Acetonitrile

This method is designed as a convenient starting point for further investigation. For optimization recommendations:



Contact Phenomenex
info@phenomenex.com



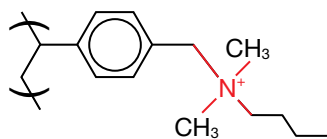
Request online
www.phenomenex.com/info/spehelp

Simplify Your Weak Acid Extractions with Strata-X-A or Strata-XL-A

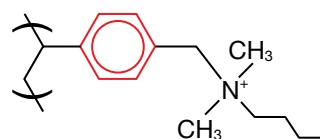
- Extremely tight retention of weak acids results in high recoveries
- Achieve cleaner extracts by washing with 100 % organic
- Ideal for all types of work including environmental and veterinary analysis

These Polymeric Sorbents Provide 3 Mechanisms of Retention

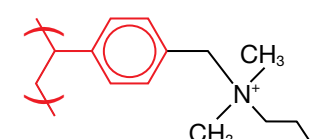
Strong Anion Exchange:
di-methylbutyl quaternary
amine ligand



π - π Bonding



Hydrophobic Interaction



Step

1

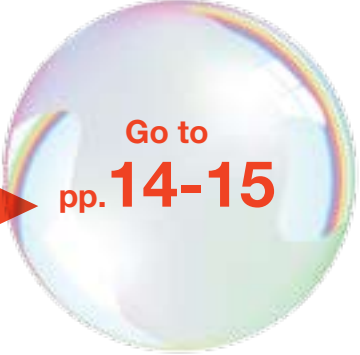
Select Your Particle and Pore Size

	Strata™-X-A, 33 μm, 85 Å	Strata-XL-A, 100 μm, 300 Å
High Concentration Samples	✓	
Small Target Analytes (< 10 kDa)	✓	
Large Target Analytes (> 10 kDa)		✓
Large Volume Samples		✓
Viscous Samples		✓

Step

2

Select Your Sorbent Mass and Format



Go to
pp. 14-15

Step

3

Follow This Easy Protocol

Method written for a 30 mg/1 mL tube

Condition

1 mL Methanol followed by 1 mL D.I. Water

Load

Recommended volume of sample (pH 6-7) (see page 14)

Wash

1 mL 25 mM Ammonium acetate (pH 6-7) followed by 1 mL Methanol

Elute

2x 500 μL 5 % Formic acid in Methanol or Acetonitrile

This method is designed as a convenient starting point for further investigation. For optimization recommendations:



Contact Phenomenex
info@phenomenex.com



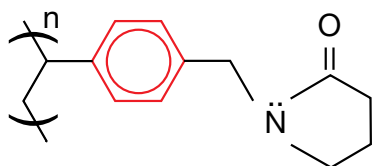
Request online
www.phenomenex.com/info/spehelp

Simplify Your Neutral Compound Extractions with Strata-X or Strata-XL

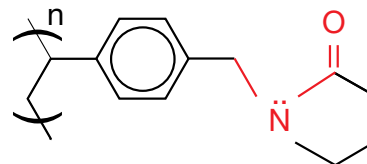
- Retains polar analytes more tightly than traditional C18 sorbents
- Achieve cleaner extracts by washing with up to 60 % organic
- Consistent, high recoveries; have confidence in your results!

These Polymeric Sorbents Provide 3 Mechanisms of Retention

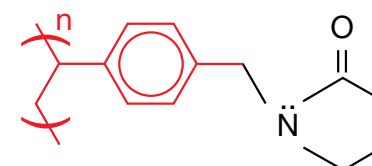
π - π Bonding



Hydrogen Bonding Dipole-Dipole Interactions



Hydrophobic Interaction



Step

1

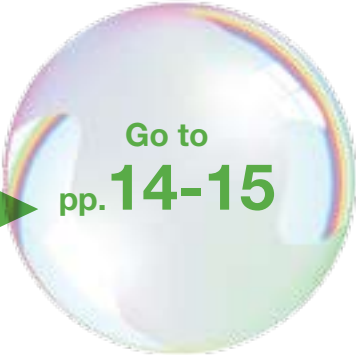
Select Your Particle and Pore Size

	Strata™-X, 33 µm, 85 Å	Strata-XL, 100 µm, 300 Å
High Concentration Samples	✓	
Small Target Analytes (< 10 kDa)	✓	
Large Target Analytes (> 10 kDa)		✓
Large Volume Samples		✓
Viscous Samples		✓

Step

2

Select Your Sorbent Mass and Format



Go to
pp. 14-15

Step

3

Follow This Easy Protocol

Method written for a 30 mg/1 mL tube

Condition

1 mL Methanol followed by 1 mL D.I. Water

Load

Recommended volume of sample (see page 14)

Wash

1 mL 5-60 % Methanol in D.I. Water. Allow sorbent to dry for 30 seconds

Elute

2x 500 µL 2 % Formic acid in Methanol or Acetonitrile

This method is designed as a convenient starting point for further investigation. For optimization recommendations:



Contact Phenomenex
info@phenomenex.com



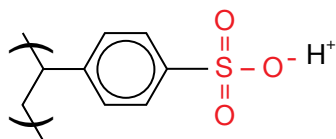
Request online
www.phenomenex.com/info/spehelp

Simplify Your Weak Base Extractions with Strata-X-C or Strata-XL-C

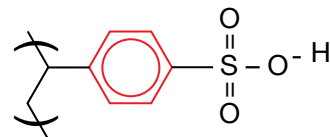
- Experience excellent recoveries of basic pharmaceutical and abused drugs
- Remove matrix interferences such as phospholipids by washing with 100 % organic
- Consistent, reproducible results; have confidence in your results!

These Polymeric Sorbents Provide 3 Mechanisms of Retention

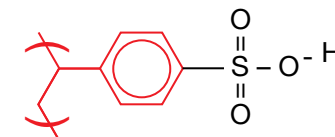
Strong Cation Exchange:
sulfonic acid ligand



π - π Bonding



Hydrophobic Interaction



Step

1

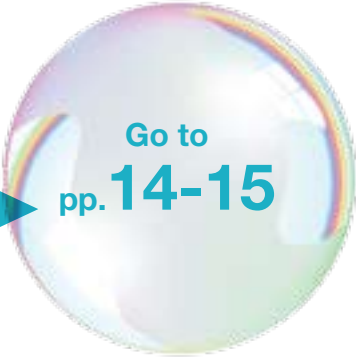
Select Your Particle and Pore Size

	Strata™-X-C, 33 μm, 85 Å	Strata-XL-C, 100 μm, 300 Å
High Concentration Samples	✓	
Small Target Analytes (< 10 kDa)	✓	
Large Target Analytes (> 10 kDa)		✓
Large Volume Samples		✓
Viscous Samples		✓

Step

2

Select Your Sorbent Mass and Format



Go to
pp. 14-15

Step

3

Follow This Easy Protocol

Method written for a 30 mg/1 mL tube

Condition

1 mL Methanol followed by 1 mL D.I. Water

Load

Recommended volume of sample (pH 6-7) (see page 14)

Wash

1 mL 0.1 N Hydrochloric acid in D.I. Water followed by 1 mL 0.1 N Hydrochloric acid in Methanol

Elute

2x 500 μL 5 % Ammonium hydroxide in Methanol or Acetonitrile

This method is designed as a convenient starting point for further investigation. For optimization recommendations:



Contact Phenomenex
info@phenomenex.com



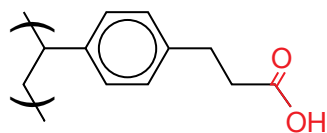
Request online
www.phenomenex.com/info/spehelp

Simplify Your Strong Base Extractions with Strata-X-CW or Strata-XL-CW

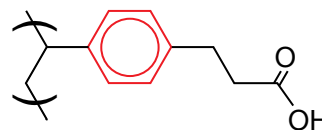
- Extremely tight retention of strong bases without irreversibly binding them to the sorbent
- Remove matrix interferences such as phospholipids by washing with 100 % organic
- Deconditioning resistant sorbent results in higher reproducibility as compared to silica-based sorbents

These Polymeric Sorbents Provide
3 Mechanisms of Retention

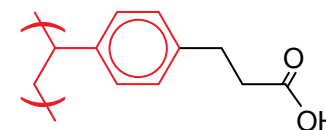
Weak Cation Exchange:
Carboxylic acid ligand



π - π Bonding



Hydrophobic Interaction



Step

1

Select Your Particle and Pore Size


	Strata™-X-CW, 33 μ m, 85 Å	Strata-XL-CW, 100 μ m, 300 Å
High Concentration Samples	✓	
Small Target Analytes (< 10 kDa)	✓	
Large Target Analytes (> 10 kDa)		✓
Large Volume Samples		✓
Viscous Samples		✓

Step

2

Select Your Sorbent Mass and Format

Go to
pp. 14-15



Step

3

Follow This Easy Protocol

Method written for a 30 mg/1 mL tube

Condition

1 mL Methanol followed by 1 mL D.I. Water

Load

Recommended volume of sample (pH 6-7) (see page 14)

Wash

1 mL D.I. Water followed by 1 mL Methanol

Elute

2x 500 μ L 5 % Formic acid in Methanol or Acetonitrile

This method is designed as a convenient starting point for further investigation. For optimization recommendations:



Contact Phenomenex
info@phenomenex.com



Request online
www.phenomenex.com/info/spehelp

Step
2a

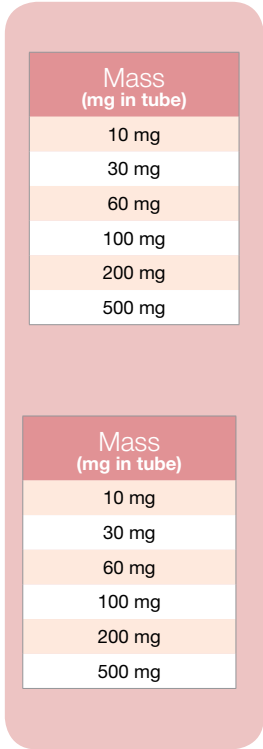
Sorbent Mass Selection

Sorbent mass dictates the amount of sample that can be loaded onto the SPE sorbent and also determines the elution volume necessary, which are both critical factors in sample preparation work. Strata-X and Strata-XL polymeric sorbents provide higher loading capacities when compared to silica-based sorbents. Select the proper sorbent mass by using the chart below.

If you chose

- ✓ **High Concentration Samples**
- ✓ **Small Target Analytes (<10 kDa)**

Strata-X Phase	Plasma /Serum	Urine	Filtered Tissue Homogenates	Water (particulate free)	Water (particulate-laden)
Strata-X, X-C, X-CW, X-A, X-AW	100 µL	250 µL	10 mg	N.A.	N.A.
	250 µL	1 mL	50 mg	N.R.	N.R.
	500 µL	2 mL	100 mg	N.R.	N.R.
	1 mL	4 mL	150 mg	50 mL	25 mL
	N.A.	8 mL	300 mg	100 mL	50 mL
	N.A.	20 mL	500 mg	500 mL	100 mL



If you chose

- ✓ **Large Target Analytes (>10 kDa)**
- ✓ **Large Volume Samples**
- ✓ **Viscous Samples**

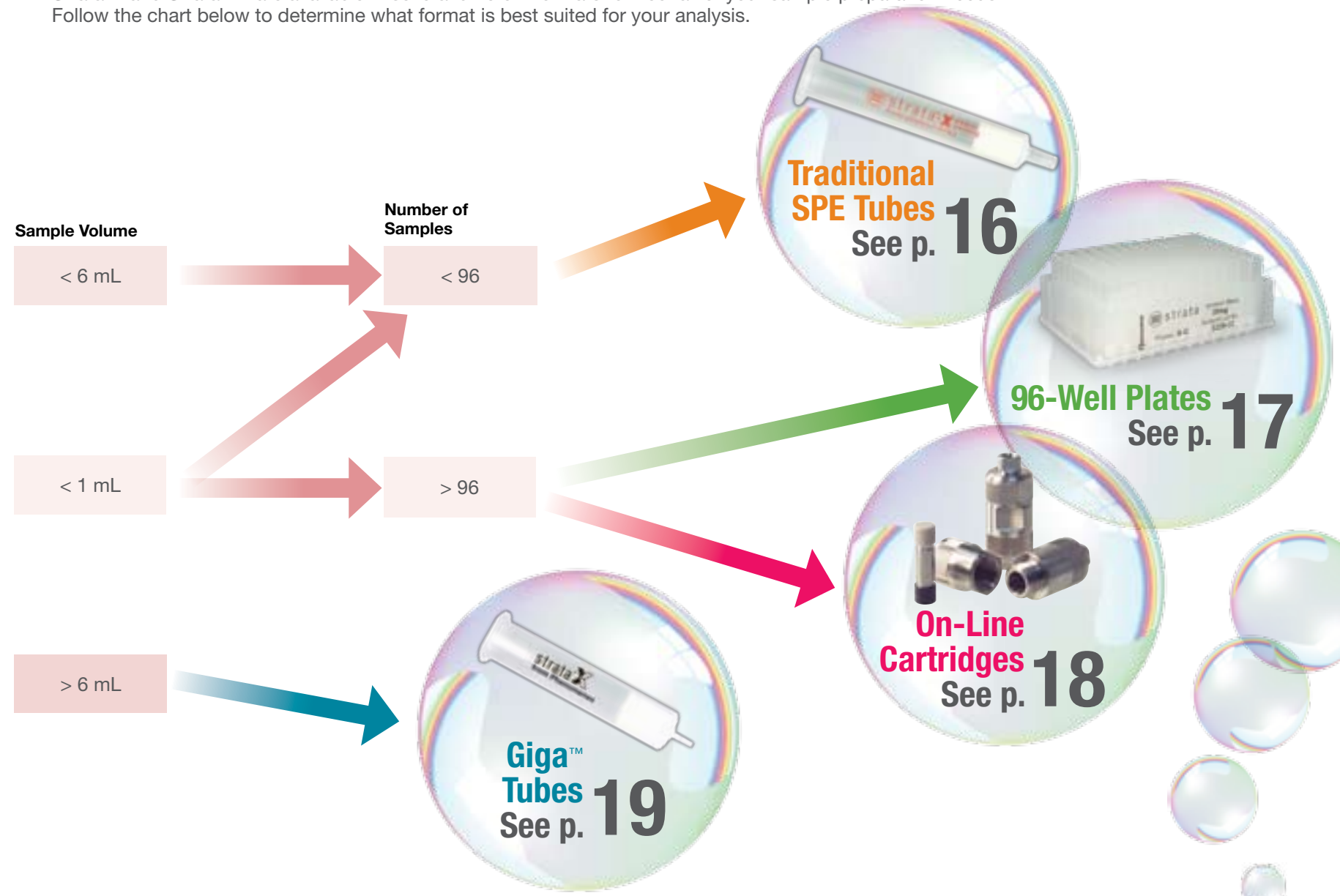
Strata-XL Phase	Plasma /Serum	Urine	Filtered Tissue Homogenates	Water (particulate free)	Water (particulate-laden)
Strata-XL, XL-C, XL-CW, XL-A, XL-AW	50 µL	125 µL	5 mg	N.A.	N.A.
	125 µL	500 µL	25 mg	N.R.	N.R.
	250 µL	1 mL	50 mg	N.R.	N.R.
	500 µL	2 mL	75 mg	25 mL	13 mL
	N.A.	4 mL	150 mg	50 mL	25 mL
	N.A.	10 mL	250 mg	250 mL	50 mL

N.A. = Not Applicable (not commonly used)
N.R. = Not Recommended (may not provide expected results)

Step
2b

Format Selection

Strata-X and Strata-XL are available in several different formats to meet all of your sample preparation needs. Follow the chart below to determine what format is best suited for your analysis.





Traditional SPE Tubes: 1, 3, and 6 mL Polypropylene Tubes

Process Samples Manually

Syringe + Adapter Cap



OR

Process Multiple Samples at Once

Tubes

Vacuum Manifold



+



Place Your Order Today

1 mL (100/box)			
Phase	10 mg	30 mg	60 mg
Strata-X-AW	–	8B-S038-TAK	–
Strata-X-A	–	8B-S123-TAK	–
Strata-X	8B-S100-AAK	8B-S100-TAK*	8B-S100-UAK
Strata-X-C	8B-S029-AAK	8B-S029-TAK*	–
Strata-X-CW	–	8B-S035-TAK	–
Strata-XL-AW	–	8B-S051-TAK	–
Strata-XL-A	–	8B-S053-TAK	–
Strata-XL	–	8B-S043-TAK	–
Strata-XL-C	–	8B-S044-TAK	–
Strata-XL-CW	–	8B-S052-TAK	–

6 mL (30/box)				
Phase	100 mg	200 mg	500 mg	1 g
Strata-X-AW	8B-S038-ECH	8B-S038-FCH	8B-S038-HCH	–
Strata-X-A	8B-S123-ECH	8B-S123-FCH	8B-S123-HCH	–
Strata-X	8B-S100-ECH	8B-S100-FCH	8B-S100-HCH	–
Strata-X-C	8B-S029-ECH	8B-S029-FCH	8B-S029-HCH	–
Strata-X-CW	8B-S035-ECH	8B-S035-FCH	8B-S035-HCH	8B-S035-JCH
Strata-XL-AW	8B-S051-ECH	8B-S051-FCH	8B-S051-HCH	–
Strata-XL-A	8B-S053-ECH	8B-S053-FCH	8B-S053-HCH	–
Strata-XL	8B-S043-ECH	8B-S043-FCH	8B-S043-HCH	–
Strata-XL-C	8B-S044-ECH	8B-S044-FCH	8B-S044-HCH	–
Strata-XL-CW	8B-S052-ECH	8B-S052-FCH	8B-S052-HCH	–

3 mL (50/box)					
Phase	30 mg	60 mg	100 mg	200 mg	500 mg
Strata-X-AW	8B-S038-TBJ	8B-S038-UBJ	8B-S038-EBJ	8B-S038-FBJ	8B-S038-HBJ
Strata-X-A	8B-S123-TBJ	8B-S123-UBJ	8B-S123-EBJ	8B-S123-FBJ	8B-S123-HBJ
Strata-X	8B-S100-TBJ	8B-S100-UBJ*	8B-S100-EBJ	8B-S100-FBJ†	8B-S100-HBJ
Strata-X-C	8B-S029-TBJ	8B-S029-UBJ*	8B-S029-EBJ	8B-S029-FBJ	8B-S029-HBJ
Strata-X-CW	8B-S035-TBJ	8B-S035-UBJ	–	8B-S035-FBJ	8B-S035-HBJ
Strata-XL-AW	–	8B-S051-UBJ	8B-S051-EBJ	8B-S051-FBJ	8B-S051-HBJ
Strata-XL-A	–	8B-S053-UBJ	8B-S053-EBJ	8B-S053-FBJ	8B-S053-HBJ
Strata-XL	–	8B-S043-UBJ	8B-S043-EBJ	8B-S043-FBJ	8B-S043-HBJ
Strata-XL-C	–	8B-S044-UBJ	8B-S044-EBJ	8B-S044-FBJ	8B-S044-HBJ
Strata-XL-CW	–	8B-S052-UBJ	8B-S052-EBJ	8B-S052-FBJ	8B-S052-HBJ

Method Development Kits

Method Development Kits		
Part No.	Description	Unit
KSO-7908	Strata-X 200 mg/3 mL tubes (5 ea) Strata-X-C 200 mg/3 mL tubes (5 ea) Strata-X-CW 200 mg/3 mL tubes (5 ea) Strata-X-AW 200 mg/3 mL tubes (5 ea) Strata Method Development Demo Software	ea

* Available in Tab-less tubes

† Available in Teflon® coated tubes

Accessories

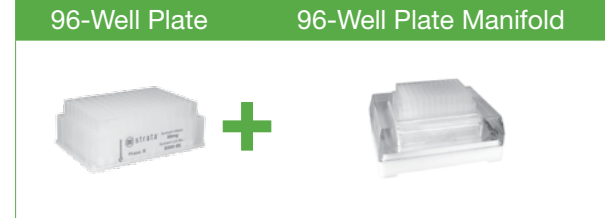
Adapter Caps		
Part No.	Description	Unit
AHO-7191	Adapter Caps for 1, 3, and 6 mL SPE tubes, polyethylene, with Luer tip	15/pk

Manifolds		
Part No.	Description	Unit
AHO-6023	SPE 12-Position Vacuum Manifold Set complete assembly	1 ea
AHO-6024	SPE 24-Position Vacuum Manifold Set complete assembly	1 ea

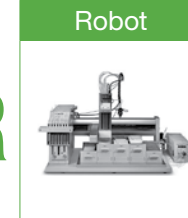


96-Well Plates

Process Samples with a Vacuum Manifold



Process Samples with a Robot



OR

Place Your Order Today

96-Well Plates, 2 mL (2/box)			
Phase	10 mg	30 mg	60 mg
Strata-X-AW	8E-S038-AGB	8E-S038-TGB	8E-S038-UGB
Strata-X-A	8E-S123-AGB	8E-S123-TGB	8E-S123-UGB
Strata-X	8E-S100-AGB	8E-S100-TGB	8E-S100-UGB
Strata-X-C	8E-S029-AGB	8E-S029-TGB	8E-S029-UGB
Strata-X-CW	8E-S035-AGB	8E-S035-TGB	8E-S035-UGB
Strata-XL-AW	–	8E-S051-TGB	–
Strata-XL-A	–	8E-S053-TGB	–
Strata-XL	–	8E-S043-TGB	–
Strata-XL-C	–	8E-S044-TGB	–
Strata-XL-CW	–	8E-S052-TGB	–

Accessories

Collection Plates, Deep Well, Polypropylene		
Part No.	Description	Unit/Box
AH0-7192	Strata 96-Well Collection Plate 350 µL/well Square	50
AH0-7193	Strata 96-Well Collection Plate 1 mL/well Square	50
AH0-7279	Strata 96-Well Collection Plate, 1 mL Round, 7 mm	50
AH0-7194	Strata 96-Well Collection Plate 2 mL/well Square	50
AH0-8635	96-Well Collection Plate, 2 mL Square/Round-Conical	50
AH0-8636	96-Well Collection Plate, 2 mL Round/Round, 8 mm	50

Sealing Mats		
Part No.	Description	Unit/Box
AH0-8597	Sealing Mats, Pierceable, 96-Square Well, Silicone	50
AH0-8598	Sealing Mats, Pre-Slit, 96-Square Well, Silicone	50
AH0-8631	Sealing Mats, Pierceable, 96-Round Well 7 mm, Silicone	50
AH0-8632	Sealing Mats, Pre-Slit, 96-Round Well 7 mm, Silicone	50
AH0-8633	Sealing Mats, Pierceable, 96-Round Well 8 mm, Silicone	50
AH0-8634	Sealing Mats, Pre-Slit, 96-Round Well 8 mm, Silicone	50
AH0-7362	Sealing Tape Pad	10

Manifold and Replacement Parts		
Part No.	Description	Unit/Box
AH0-7284	96-Well Plate Manifold, Acrylic	1 ea
AH0-7285	96-Well Plate Manifold Replacement Gasket, Flat (to fit between acrylic chamber and 96-well plate), black	1 ea
AH0-7198	96-Well Plate Manifold Replacement Gasket, Profile, (to fit between acrylic chamber and manifold base), white	1 ea
AH0-8637	Reservoir, Single Well, High Profile, 96 Bottom Troughs	25/Box



On-Line Cartridges

Compatible with:

On-Line SPE 2-position, 10-port*

OR

2-position, 6-port*

*Fluid Processors available in PEEK™ and stainless steel. 10-position also available.

Recommended Starting Parameters for Strata-X On-line Cartridges

Extraction Conditions			
Time (min)	Pump 1 (3 mL/min)	Pump 2 (1 mL/min)	Valve Position
0	95 % A: 5 % B	95 % A: 5 % B	Load position
0.5		95 % A: 5 % B	Switch position Load to Elute
2.8		15 % A: 85 % B	Switch position Elute to Load
3	95 % A: 5 % B	95 % A: 5 % B	Load position

Mobile Phase: A: 0.1 % Formic acid / Water

B: 0.1 % Formic acid / Acetonitrile

Injection: 50 µL of diluted porcine plasma (1:1)

Detection: Bruker Esquire™ 2000 Ion-Trap MS analyzer

Source: ESI-Positive mode

Scan Range: m/z 100-500

Run Time: 3 minutes (with analytical column)

Run Time: 1.2 minutes (without analytical column) (1 minute gradient)

Place Your Order Today

On-Line Cartridges (1 ea)*	
Phase	20 x 2.0 mm
Strata-X-AW	–
Strata-X-A	–
Strata-X	00M-S033-B0-CB
Strata-X-C	00M-S048-B0-CB
Strata-X-CW	00M-S036-B0-CB
Strata-XL-AW	–
Strata-XL-A	–
Strata-XL	–
Strata-XL-C	–
Strata-XL-CW	–

*Requires 20 mm Cartridge Holder (CH0-5845)

Note: 25 µm particle sizes are packed into Strata-X on-line cartridges.



Giga™ Tubes

Process Samples Manually

Syringe + Adapter Cap



OR

Process Multiple Samples at Once

Giga Tubes*

Tall Boy™ Manifold



*Contact Phenomenex or your local Phenomenex distributor about availability of 150 mL tubes.

Place Your Order Today

12 mL (20/box)			
Phase	500 mg	1 g	2 g
Strata-X-AW	8B-S038-HDG	8B-S038-JDG	—
Strata-X-A	8B-S123-HDG	8B-S123-JDG	—
Strata-X	8B-S100-HDG	8B-S100-JDG	—
Strata-X-C	8B-S029-HDG	8B-S029-JDG	—
Strata-X-CW	8B-S035-HDG	8B-S035-JDG	—
Strata-XL-AW	—	—	8B-S051-KDG
Strata-XL-A	—	—	8B-S053-KDG
Strata-XL	—	—	8B-S043-KDG
Strata-XL-C	—	—	8B-S044-KDG
Strata-XL-CW	—	—	8B-S052-KDG

20 mL (20/box)			
Phase	1 g	2 g	5 g
Strata-X-AW	8B-S038-JEG	8B-S038-KEG	—
Strata-X-A	8B-S123-JEG	8B-S123-KEG	—
Strata-X	8B-S100-JEG	8B-S100-KEG	—
Strata-X-C	8B-S029-JEG	8B-S029-KEG	—
Strata-X-CW	8B-S035-JEG	8B-S035-KEG	—
Strata-XL-AW	—	8B-S051-KEG	8B-S051-LEG
Strata-XL-A	—	8B-S053-KEG	8B-S053-LEG
Strata-XL	—	8B-S043-KEG	8B-S043-LEG
Strata-XL-C	—	8B-S044-KEG	8B-S044-LEG
Strata-XL-CW	—	8B-S052-KEG	8B-S052-LEG

60 mL (16/box)			
Phase	5 g	10 g	20 g
Strata-X-AW	8B-S038-LFF	—	—
Strata-X-A	8B-S123-LFF	—	—
Strata-X	8B-S100-LFF	8B-S100-MFF	8B-S100-VFF
Strata-X-C	8B-S029-LFF	8B-S029-MFF	8B-S029-VFF
Strata-X-CW	8B-S035-LFF	—	—
Strata-XL-AW	8B-S051-LFF	8B-S051-MFF	8B-S051-VFF
Strata-XL-A	8B-S053-LFF	8B-S053-MFF	—
Strata-XL	8B-S043-LFF	8B-S043-MFF	8B-S043-VFF
Strata-XL-C	8B-S044-LFF	8B-S044-MFF	8B-S044-VFF
Strata-XL-CW	8B-S052-LFF	8B-S052-MFF	—

150 mL (8/box)	
Phase	50 g
Strata-X-AW	—
Strata-X-A	—
Strata-X	8B-S100-YSN
Strata-X-C	—
Strata-X-CW	—
Strata-XL-AW	—
Strata-XL-A	—
Strata-XL	8B-S043-YSN
Strata-XL-C	—
Strata-XL-CW	—

Accessories

Adapter Caps		
Part No.	Description	Unit
AH0-7378	Adapter Caps for 12 and 20 mL SPE tubes, polyethylene, with Luer tip	5/pk
AH0-7379	Adapter Caps for 60 mL SPE tubes, polyethylene, with Luer tip	5/pk

Manifolds		
Part No.	Description	Unit
AH0-7502	SPE 10-Position Tall-Boy Vacuum Manifold, complete assembly	1 ea

Terms and Conditions

Subject to Phenomenex Standard Terms and Conditions, which may be viewed at www.phenomenex.com/TermsAndConditions

Trademarks

Strata-X, Giga, and Tall Boy are trademarks of Phenomenex, Inc. PEEK is a trademark of Victrex plc. Teflon is a registered trademark of E.I. du Pont de Nemours and Co. Esquire is a trademark of Bruker Daltonics, Inc.

Strata-X is patented by Phenomenex, Inc. U.S. Patent No. 7,119,145

© 2011 Phenomenex, Inc. All rights reserved.

Australia
t: 02-9428-6444
f: 02-9428-6445
auinfo@phenomenex.com

France
01 30 09 21 10
01 30 09 21 11
franceinfo@phenomenex.com

The Netherlands
030-2418700
030-2383749
nlinfo@phenomenex.com

Austria
t: 01-319-1301
f: 01-319-1300
anfrage@phenomenex.com

Germany
06021-58830-0
06021-58830-11
anfrage@phenomenex.com

New Zealand
09-4780951
09-4780952
nzinfo@phenomenex.com

Belgium
t: +31 (0)30-2418700
f: +31 (0)30-2383749
beinfo@phenomenex.com

Ireland
01 247 5405
+44 1625-501796
eireinfo@phenomenex.com

Norway
810 02 005
+45 4810 6265
nordicinfo@phenomenex.com

Canada
t: (800) 543-3681
f: (310) 328-7768
info@phenomenex.com

Italy
051 6327511
051 6327555
italiainfo@phenomenex.com

Puerto Rico
(800) 541-HPLC
(310) 328-7768
info@phenomenex.com

Denmark
t: 4824 8048
f: 4810 6265
nordicinfo@phenomenex.com

Luxembourg
+31 (0)30-2418700
+31 (0)30-2383749
nlinfo@phenomenex.com

United Kingdom
01625-501367
01625-501796
ukinfo@phenomenex.com

Finland
t: (09)4789 0063
f: +45 4810 6265
nordicinfo@phenomenex.com

Mexico
(55) 5018 3791
(310) 328-7768
tecnicomx@phenomenex.com

All other countries:
Corporate Office USA 
(310) 212-0555
(310) 328-7768
info@phenomenex.com

BR75930510 _J



www.phenomenex.com

Phenomenex products are available worldwide. For the distributor in your country, contact Phenomenex USA, International Department at international@phenomenex.com